



SOLD

SPACIOUS 2 BED PLUS STUDY IN CROYDON CENTRAL

The pleasure of easy living and outstanding convenience is all yours with this contemporary 2 bedrooms plus study apartment in the heart of Croydon.

A vibrant location sets the scene, where parks, trails, public transport, popular shops and eateries can be reached within an easy walk.

Freshly painted and immaculately presented throughout, comprising a hostess kitchen with quality appliances, ample cupboard space and stone benchtops which overlooks a spacious open plan dining and sitting room that seamlessly flows out to a private undercover balcony.

Upstairs you will discover two generous light-filled robed bedrooms, master with sparkling ensuite effect bathroom and a separate study for those working from home.

Part of a well-constructed boutique development with suspended concrete slab floors and solid concrete party wall system this stunning apartment also features a separate powder room, reverse cycle heating/cooling in all rooms, hardwood timber floors, secure undercover car space on title as well as a separate private laundry/storage room.

A MUST TO INSPECT! CALL BILL NOW ON 0419514276 FOR INSPECTION TIMES

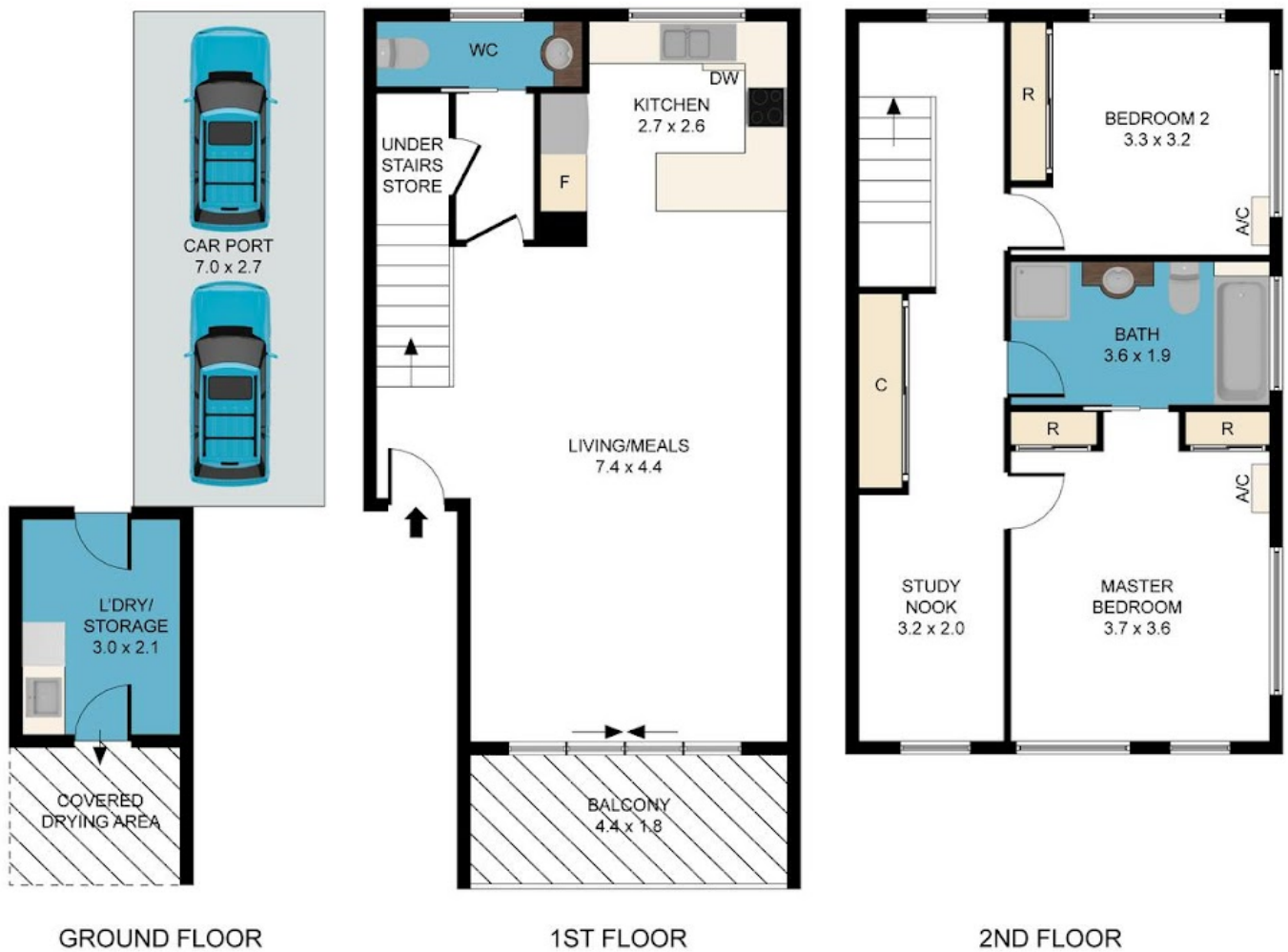
2 BED | 1 BATH | 0 CAR

PRICE:
\$540,000

OPEN FOR INSPECTION:
N/A



Bill Katsoulis
0419514276
billkatsoulis@atrealty.com.au
www.atrealty.com.au



Disclaimer: Please note this floor plan is for marketing purposes and is to be used as a guide only. All dimensions are estimates only and may not be exact measurements.

4/1 Alfrick Road, Croydon

Bill Katsoulis
0419514276

billkatsoulis@atrealty.com.au
www.atrealty.com.au

Whilst every attempt has been made to ensure the accuracy of the floor plan contained here, measurements of doors, windows, other items are approximate and no responsibility is taken for any error, omission, or mis-statement. This plan is for illustrative purposes only and should be used as such by any prospective purchaser. The services, systems and appliances shown have not been tested and no guarantee as to their operability or efficiency can be given.



