



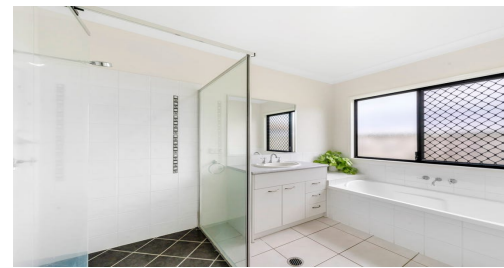
# Sold

4  | 2  | 2 

8 RATHBONE COURT, MUDGEERABA, QLD, 4213



**SANDRA LIEBENBERG**  
PROPERTIES GOLD COAST



## FAMILY HOME OR EXCELLENT INVESTMENT

### EXCEPTIONAL LOCATION and INVESTMENT HOME

Magnificently located in the heart of Mudgeeraba, this single level family home offers fabulous flexibility and welcomes an abundance of natural light into its open, free-flowing interiors. The stylish designer kitchen is strategically placed to provide the ideal social interaction hub with seamless connection between, indoor/outdoor living zones with a sense of space and natural light flow throughout.

Equally impressive are the four generously proportioned bedrooms including master with ensuite designed with a balanced approach for privacy and functionality is packed with space and for all your family needs

Step outside and you will appreciate the huge backyard for all your family and friends to enjoy and also gives the lucky buyer the opportunity to add a pool and still have plenty of yard space for children to play

Situated in a prized pocket of Mudgeeraba and within walking distance to Mudgeeraba shopping centre, Cafe's and public transport is sure to make an immediate impression! Plus... walking tracks, parkland lands, private/local schools and kinder/childcare facilities, as well as minutes to the M1 provides an excellent opportunity for the new owner to move in instantly or to reap the benefits of a rewarding investment.

Rental information and appraisal upon request

**Sandra Liebenberg // 0437081639**




sandra@slpropertiesgc.com.au // [www.slpropertiesgc.com.au](http://www.slpropertiesgc.com.au)

PRICE:  
\$1,500

OPEN FOR INSPECTION:  
N/A



# Sold

4  | 2  | 2 

8 RATHBONE COURT, MUDGEERABA, QLD, 4213

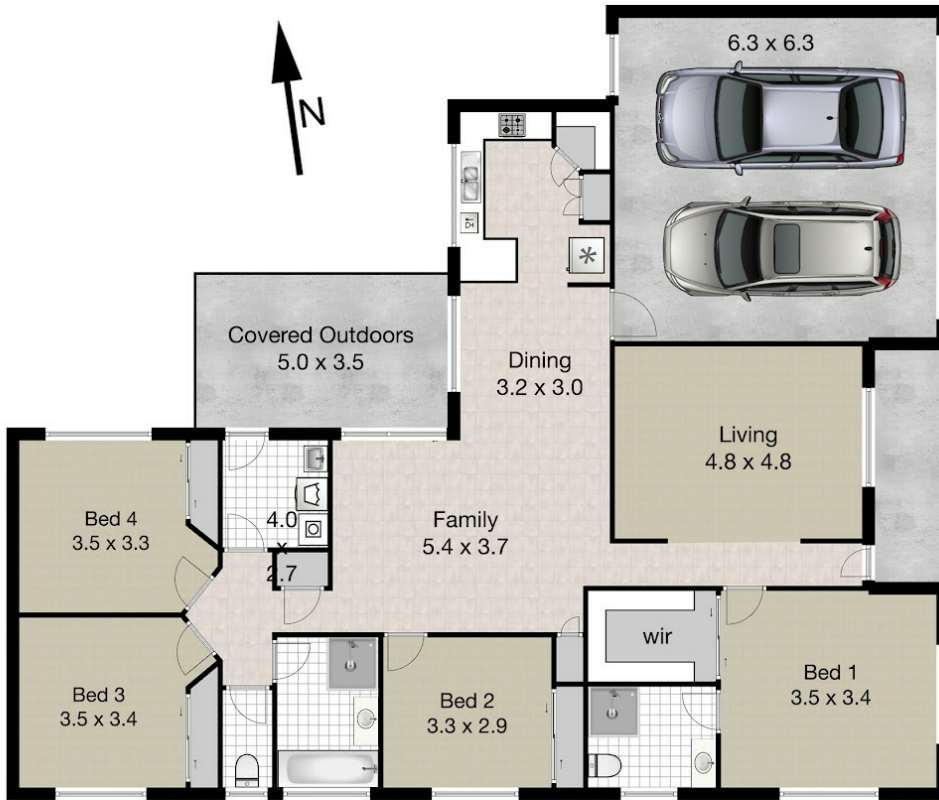


**SANDRA LIEBENBERG**  
PROPERTIES GOLD COAST

## 8 Rathbone Court, Mudgeeraba

Land 600m<sup>2</sup> | Garage 2 cars | Bedroom 4 | Bathrooms 2 | Living 2  
Total approximate covered Floor Area 195m<sup>2</sup>

 **Professionals**  
Mudgeeraba



Whilst every attempt has been made to ensure the accuracy of the floor plan. Measurements of doors, windows rooms and any other items are approximate and no responsibility is taken for any error, omission or misstatement. This plan is for illustrative purposes only and should be used as such by any prospective purchaser.

**Sandra Liebenberg // 0437081639**

sandra@slpropertiesgc.com.au // [www.slpropertiesgc.com.au](http://www.slpropertiesgc.com.au)