




FOR SALE

6  | 4  | 2 

38 GILWARD DRIVE, MUDGEERABA, QLD, 4213



SANDRA LIEBENBERG
PROPERTIES GOLD COAST



FAMILY RETREAT WITH DUAL LIVING PLUS STUDIO ON (APPROX.) 4.9 ACRES

This is a rare opportunity to own a significant land holding minutes from Mudgeeraba Town Centre of 4.9 acres of manicured grounds with direct access to the Mudgeeraba Creek. The versatility here is the selling point with three separate buildings that offers huge flexibility for family life and a multitude of uses ranging from, multi-generational living to running your own business /office or maybe, a wellness retreat to relax and reset (STCA) and furthermore, the grounds are perfectly suitable for a horse or two

PROPERTY FEATURES:

Main Home:

- . Spacious two-level double brick family home with in-ground pool and rolling hill vistas
- . Outdoor entertaining perfect area for relaxing and entertaining family and friends
- . Easy interior flow with featured Slate flooring and great indoor-outdoor connection
- . 4 bedrooms, 3 bathrooms, master with en-suite and the perfect showcase walk-in-robe
- . Generous sized new custom-built kitchen with walk-in pantry and an abundance of storage
- . Multi-purpose laundry-bathroom with direct access to outdoor service drying area

Second Home:

- . Western Red Cedar Features
- . 2 bedrooms and one bathroom
- . Open plan kitchen/dining leading to deck with vistas over the land
- . Spacious Hi-clearance shed/carport

PRICE:
\$1,850,000




OPEN FOR INSPECTION:
N/A

Sandra Liebenberg // 0437081639

sandra@slpropertiesgc.com.au // www.slpropertiesgc.com.au



FOR SALE

6  | 4  | 2 

38 GILWARD DRIVE, MUDGEERABA, QLD, 4213

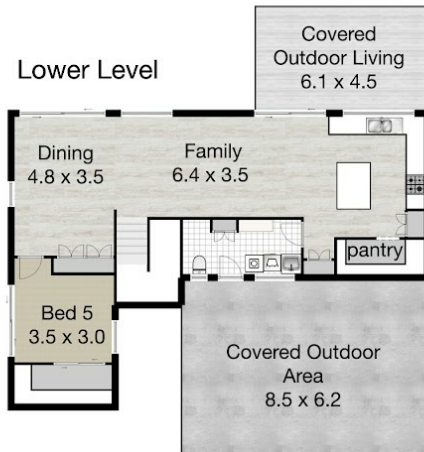


SANDRA LIEBENBERG
PROPERTIES GOLD COAST

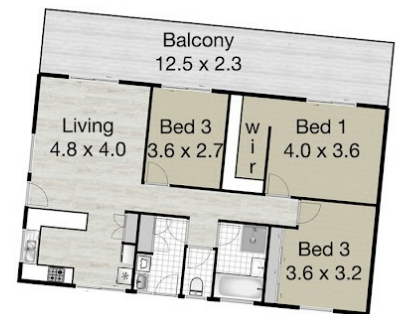
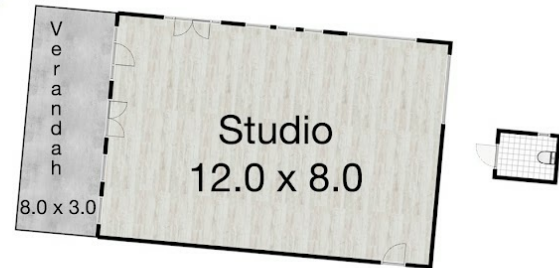
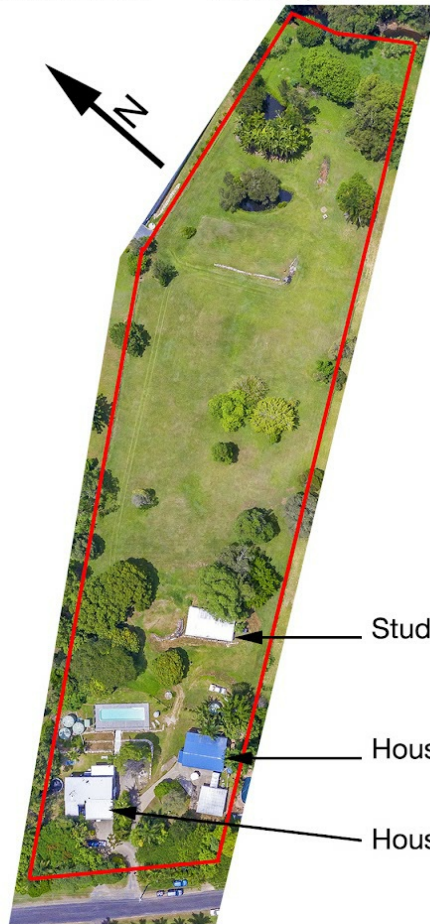
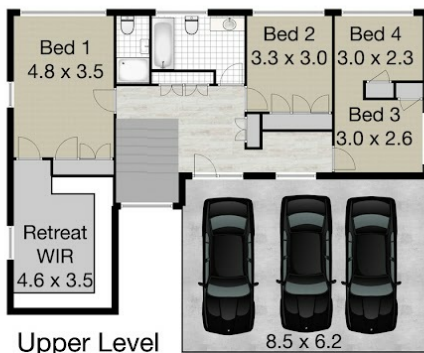


38 Gilward Drive, Mudgeeraba

House 1 floor area 309m² - House 2 floor area 125m² - Workshop 52m²
Land 20200m²



House 1



House 2



Whilst every attempt has been made to ensure the accuracy of the floor plan. Measurements of doors, windows rooms and any other items are approximate and no responsibility is taken for any error, omission or misstatement. This plan is for illustrative purposes only and should be used as such by any prospective purchaser.

Sandra Liebenberg // 0437081639

sandra@slpropertiesgc.com.au // www.slpropertiesgc.com.au