




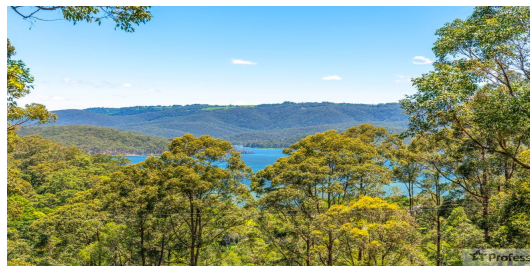
FOR SALE

3  | 2  | 3 

562 THE PANORAMA, TALLAI, QLD, 4213



SANDRA LIEBENBERG
PROPERTIES GOLD COAST



APPROX 22 ACRES OF PREMIUM UNIQUE ACREAGE WITH PANORAMIC WATER VIEWS

Viewing of this property is by appointment only due to private access and neighbour privacy. Please register your interest in attending Open House prior to the event by email or contacting Sandra Liebenberg on 043 708 1639.

PRICE:
\$1,600,000

OPEN FOR INSPECTION:
N/A

Approx 55 Minutes from Brisbane CBD and 10 minutes to all major shopping centres, private and public schools, this double kiln brick single level family home built in 1985 provides the ultimate serene lifestyle opportunity, seamlessly blending traditional Australian features with an abundance of natural landscaping and views across the well known 'Hinze Dam'. Voluminous soaring ceilings defined by exposed Douglas Fir support beams and manual opening skylights, set the tone and allows natural light to flood the open-plan layout with seamless flow to large entertaining terrace with Chinese Limestone tiles and wrap-around deck for relaxed entertaining. Traditional timber textures of solid wood throughout, including New Guinea Rosewood cabinetry and a well-appointed kitchen with Tasmanian Blackwood, large island bench, exquisite bathroom updates, creates a stunning family home of refinement, space and style.

Representing privacy and further enhanced by picturesque vistas in a highly sought-after location, this unique property also offers the astute buyer so much potential for all sorts of pursuits.

Opportunities (STCA)




- Private Holiday B&B Retreat
- Boutique Fitness Retreat

Sandra Liebenberg // 0437081639

sandra@slpropertiesgc.com.au // www.slpropertiesgc.com.au



FOR SALE

3  | 2  | 3 

562 THE PANORAMA, TALLAI, QLD, 4213

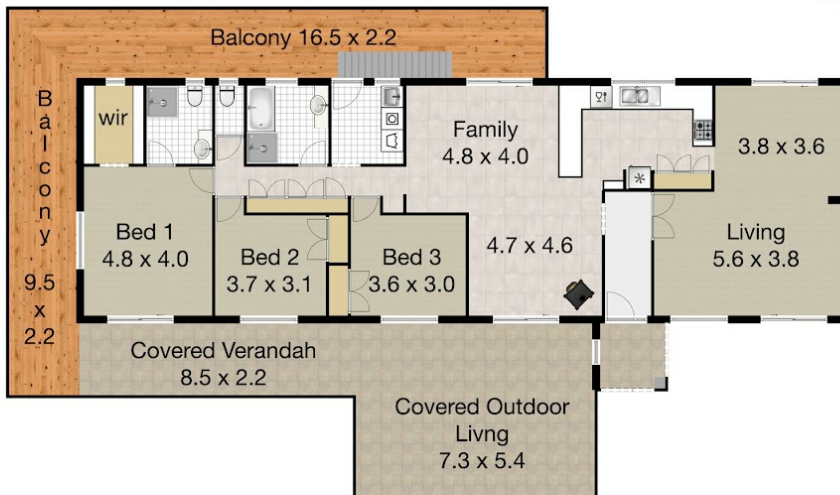
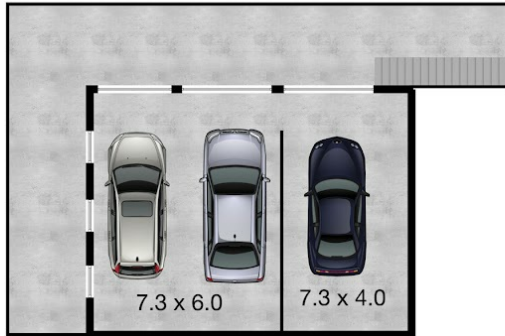


SANDRA LIEBENBERG
PROPERTIES GOLD COAST

562 The Panorama, Tallai

Land 88800m² | Garage 3 cars | Bedroom 3 | Bathrooms 2 | Living 2
Total approximate Covered Floor Area 597m²

 **Professionals**
Mudgeeraba



Whilst every attempt has been made to ensure the accuracy of the floor plan. Measurements of doors, windows rooms and any other items are approximate and no responsibility is taken for any error, omission or misstatement. This plan is for illustrative purposes only and should be used as such by any prospective purchaser.

Sandra Liebenberg // 0437081639

sandra@slpropertiesgc.com.au // www.slpropertiesgc.com.au