

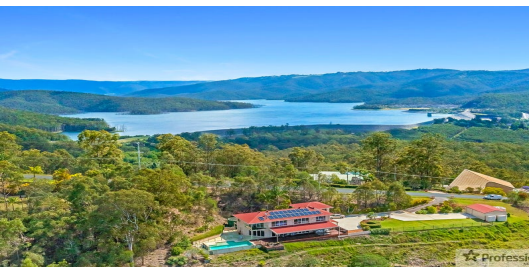
FOR SALE

5  | 2  | 2 

97 RED OAK DRIVE, TALLAI, QLD, 4213



SANDRA LIEBENBERG
PROPERTIES GOLD COAST



AUCTION - UNLESS SOLD PRIOR - CAPTURING PANORAMIC GOLD COAST VIEWS

Designed with panoramic vistas in mind, this spectacular Tallai residence with expansive use of glass filling the home with natural light, allows the vista to take centre stage and compliments the open plan living. Spilling out to a massive entertaining deck with captivating 270-degree Gold Coast views and coupled with the inspired design, finish and presentation, is simply the best!

Spread over 323sqm, every detail has been considered in creating this spacious family home that is stylish, elegant, innovative and breathtaking at every turn. Laid out over two levels, the ground floor draws the visitors through the open plan living areas and leads to a poolside entertainer's haven capturing the panoramic city skyline and promises a luxurious lifestyle of exquisite quality. The chef's kitchen also commands attention with an enormous island bench and views over the living areas is sure to be central to daily life. The top floor of this wonderful residence is devoted to four bedrooms, two way main bathroom and luxury master with breathtaking views, lavish walk-in wardrobe and full en-suite designed as a space to enjoy.

Located in a quiet cul-de-sac and offering easy access to all main stream amenities, this unique home has all the features, technology and services one would expect of residence of this caliber.

Features:

- * Gold Coast and Hinterland Panoramic Views
- * Modern light-filled open-plan living with streamline fireplace and spectacular-views
- * Designer kitchen with high-end appliances and finishes

Sandra Liebenberg // 0437081639

sandra@slpropertiesgc.com.au // www.slpropertiesgc.com.au





PRICE:

\$1,600,000

OPEN FOR INSPECTION:

N/A

FOR SALE

5  | 2  | 2 

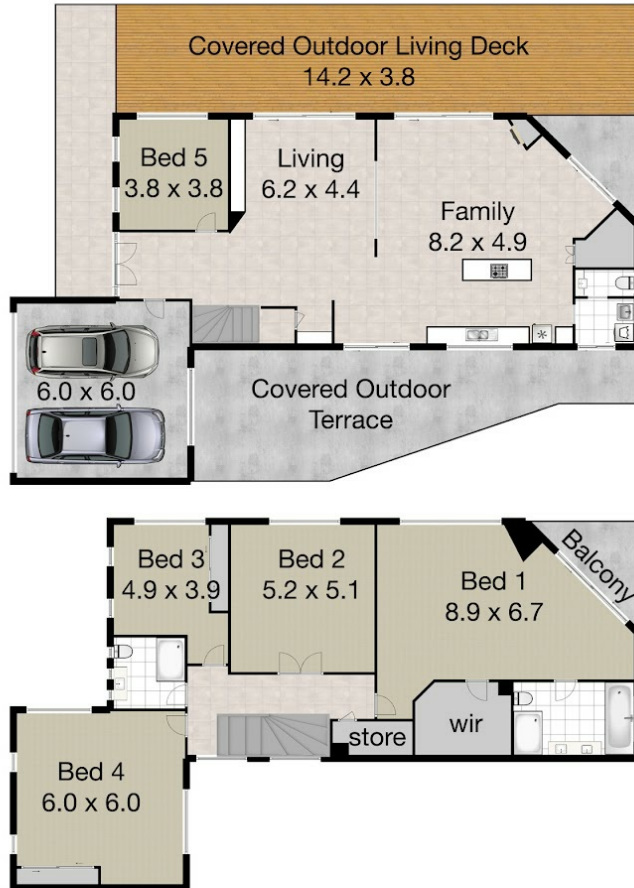
97 RED OAK DRIVE, TALLAI, QLD, 4213



SANDRA LIEBENBERG
PROPERTIES GOLD COAST

97 Red Oak Drive, Tallai

Garage 4 car | Bedroom 5 | Bathrooms 2 | Living 2
Total Approximate Floor Area 501m² Land 30060m²



 **Professionals**
Mudgeeraba



9.0 x 6.0
Workshop

Whilst every attempt has been made to ensure the accuracy of the floor plan. Measurements of doors, windows rooms and any other items are approximate and no responsibility is taken for any error, omission or misstatement. This plan is for illustrative purposes only and should be used as such by any prospective purchaser.

Sandra Liebenberg // 0437081639

sandra@slpropertiesgc.com.au // www.slpropertiesgc.com.au