

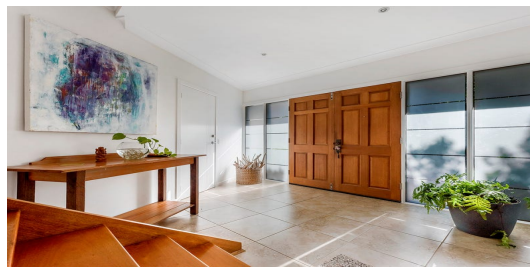
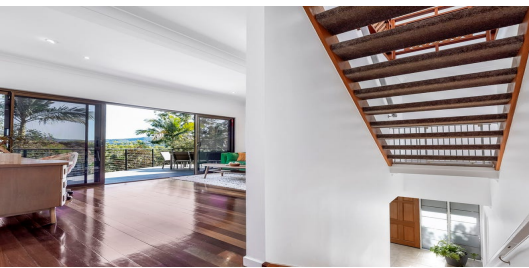
FOR SALE

5  | 3  | 2 

15 SUMMERHILL COURT, MUDGEERABA, QLD, 4213



SANDRA LIEBENBERG
PROPERTIES GOLD COAST



SOLD BY JAYNE AND DANI

It is our great pleasure to present 15 Summerhill Court, Mudgeeraba to the Gold Coast property market.

Located in Mudgeeraba's most sought after street, this impressive architecturally designed North facing five bedroom family home is full of character, space and natural light.

Showcasing spectacular Gold Coast city skyline views from one side and breath taking Hinterland views from the other, there is so much to appreciate and enjoy. This fabulous light filled home over three levels boasts a versatile floor plan with multiple living areas, suited for long term family appeal and perfect for growing families. Graced with cathedral ceilings and contemporary finishes that blend beautifully with its dedication to relaxed living and entertaining.

Property Specifications:

- *Five bedrooms - Master with private balcony and ensuite
- *Three Bathrooms
- *Centrally located kitchen with gas cooking, dishwasher and plenty of storage
- *Stunning timber floors
- *Brand new carpet
- *Reverse cycle air-conditioning
- *Near new in-ground swimming pool
- *Under covered alfresco entertaining area
- *Double lock up garage with separate workshop and extra parking

PRICE:
\$870,000

OPEN FOR INSPECTION:
N/A

Sandra Liebenberg // 0437081639

sandra@slpropertiesgc.com.au // www.slpropertiesgc.com.au



FOR SALE

5  | 3  | 2 

15 SUMMERHILL COURT, MUDGEERABA, QLD, 4213

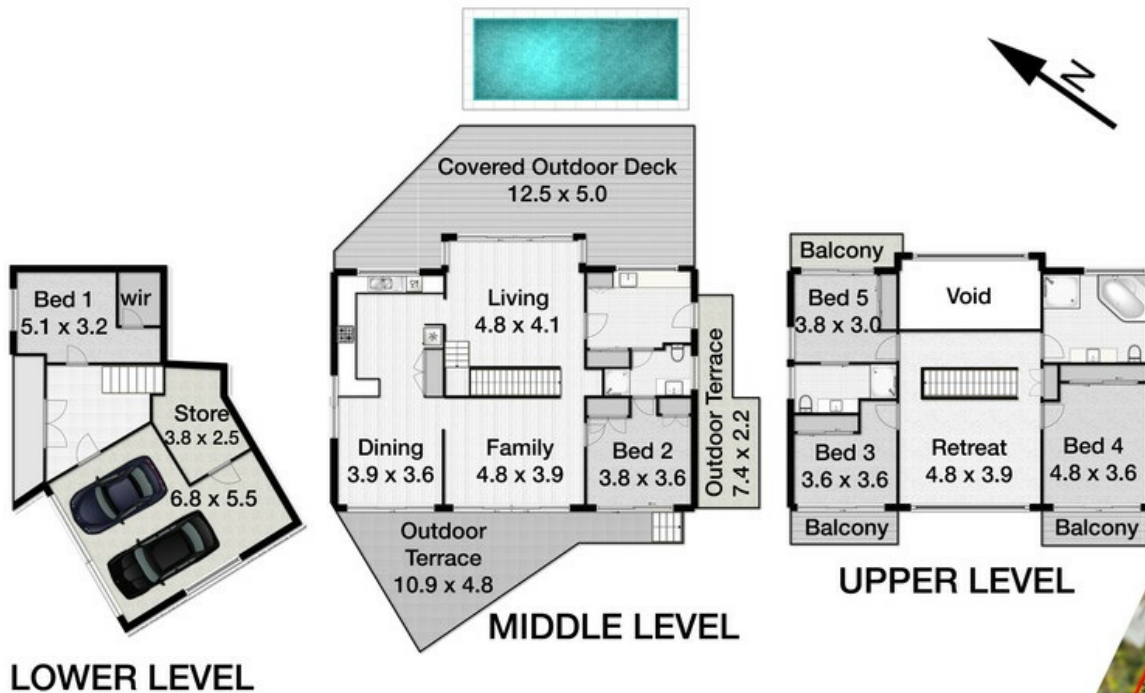


SANDRA LIEBENBERG
PROPERTIES GOLD COAST

15 Summerhill Court, Mudgeeraba

Land 944m² | Garage 2 cars | Bedroom 5 | Bathrooms 3 | Living 3
Total approximate covered Floor Area 380 m²

 **Professionals**
Mudgeeraba



Whilst every attempt has been made to ensure the accuracy of the floor plan. Measurements of doors, windows rooms and any other items are approximate and no responsibility is taken for any error, omission or misstatement. This plan is for illustrative purposes only and should be used as such by any prospective purchaser.



Sandra Liebenberg // 0437081639

sandra@slpropertiesgc.com.au // www.slpropertiesgc.com.au