

# FOR SALE

3  | 2  | 1 

33/14 BRIDGMAN DRIVE, REEDY CREEK, QLD, 4227



**SANDRA LIEBENBERG**  
PROPERTIES GOLD COAST



## ATTENTION FIRST HOME BUYERS - INVESTORS - DOWNSIZERS - BODY CORP

Set within a beautifully presented small complex, this town-home delivers easy care living and an extensive outdoor space, offering privacy and ambience. The centrally located kitchen has a dishwasher, wall oven and plenty of storage. Showcasing a neutral colour pallet which provides a calm coastal feel in the combined living and dining area. This Three bedroom, Two bathroom town-home is located in Reedy Creek and boasts a corner position. Upstairs is spacious with good size bedrooms. The master has a walk in robe and en-suite. This town-home is low maintenance and secure ensuring safety and is in walking distance to local shops, schools and a medical centre.

### Property Features:

- Three Bedrooms Master bedroom has walk in robe and ensuite
- Two Bathrooms
- Centrally located kitchen with wall oven and dishwasher
- Separate laundry
- Split system air conditioner
- Ceiling fans
- Downstairs powder room
- Internal access
- Single lockup garage plus two car spaces
- Fully fenced
- Body Corp is approx \$55.00 per week
- The complex has a swimming pool and BBQ area

PRICE:  
\$350,000




OPEN FOR INSPECTION:  
N/A

**Sandra Liebenberg // 0437081639**

sandra@slpropertiesgc.com.au // [www.slpropertiesgc.com.au](http://www.slpropertiesgc.com.au)



# FOR SALE

3  | 2  | 1 

33/14 BRIDGMAN DRIVE, REEDY CREEK, QLD, 4227

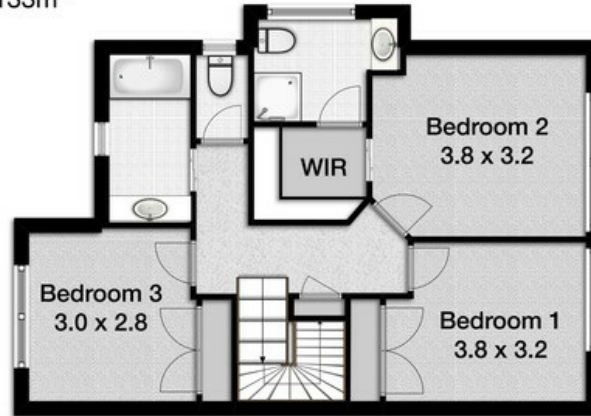


**SANDRA LIEBENBERG**  
PROPERTIES GOLD COAST

## Villa 33 10-14 Bridgman Drive, Reedy Creek

Bedroom 3 | Bathrooms 2 | Living 1 | Garage 1 and 2 Car Parks | Land Area 165m<sup>2</sup>  
Total approximate covered Floor Area 133m<sup>2</sup>

 **Professionals**  
Mudgeeraba



Whilst every attempt has been made to ensure the accuracy of the floor plan. Measurements of doors, windows rooms and any other items are approximate and no responsibility is taken for any error, omission or misstatement. This plan is for illustrative purposes only and should be used as such by any prospective purchaser.

**Sandra Liebenberg // 0437081639**

sandra@slpropertiesgc.com.au // [www.slpropertiesgc.com.au](http://www.slpropertiesgc.com.au)