

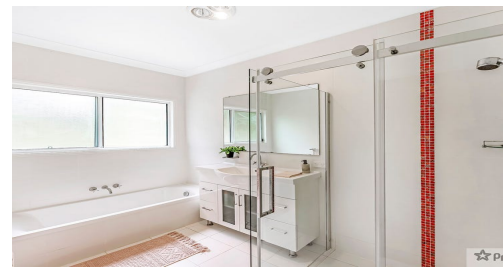
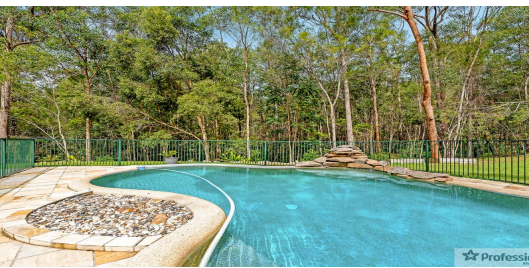
# FOR SALE

5  | 2  | 2 

41 CANOPY DRIVE, BONOGIN, QLD, 4213



**SANDRA LIEBENBERG**  
PROPERTIES GOLD COAST



## FLAWLESS CHARACTER HOME IN MUDGEERABA FOREST

Contemporary style and family functionality unite in this stunning Queensland residence delivering the perfect environment for relaxed living and entertaining. It offers a sanctuary of style with a striking character facade and a spacious low maintenance design.

Every element that's essential for family enjoyment is offered by this outstanding five-bedroom home. This flawless residence on a 5047sqm block of park like land is positioned in the highly coveted pocket of Mudgeeraba Forest.

Upon entry gorgeous Tasmanian oak timber floors lead to the main living areas that present an elegant blend of space and light emphasized by soaring raked ceilings, split air conditioning, timber floors and glass expanses that open onto a spacious outdoor entertaining terrace with amazing views of the hinterland and sparkling swimming pool.

An inspiring kitchen complete with stainless steel appliances and quality cabinetry is the embodiment of 5 star living. Centrally located and featuring stone bench tops and large island bench for informal dining.

Designed for comfort and to encourage blissful relaxation, the master bedroom, with beautiful bay windows and access to the garden is a delightful parents' haven finished with walk-in robe, private en suite with vanity and generous shower.

The further four bedrooms are well proportioned and serviced by a modern family bathroom with

**PRICE:**  
**\$950,000**

**OPEN FOR INSPECTION:**  
**N/A**




# Sandra Liebenberg // 0437081639

sandra@slpropertiesgc.com.au // [www.slpropertiesgc.com.au](http://www.slpropertiesgc.com.au)





# FOR SALE

5  | 2  | 2 

41 CANOPY DRIVE, BONOGIN, QLD, 4213



**SANDRA LIEBENBERG**  
PROPERTIES GOLD COAST

## 41 Canopy Drive, Bonogin

Land 5047m<sup>2</sup> | Bedroom 5 | Bathrooms 2 | Living 3  
Total approximate covered Floor Area 391m<sup>2</sup>



 **Professionals**  
Mudgeeraba



Whilst every attempt has been made to ensure the accuracy of the floor plan. Measurements of doors, windows rooms and any other items are approximate and no responsibility is taken for any error, omission or misstatement. This plan is for illustrative purposes only and should be used as such by any prospective purchaser.

**Sandra Liebenberg // 0437081639**

sandra@slpropertiesgc.com.au // [www.slpropertiesgc.com.au](http://www.slpropertiesgc.com.au)