




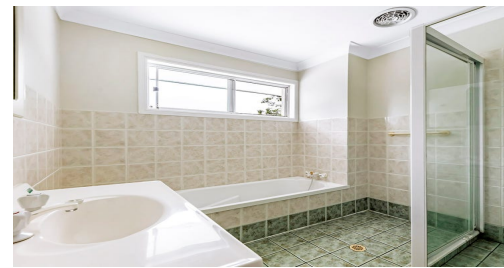
FOR SALE

6  | 5  | 2 

19 TARAWARA AVENUE, TALLAI, QLD, 4213



SANDRA LIEBENBERG
PROPERTIES GOLD COAST



MEDITERRANEAN SPLENDOUR PLUS HORSE HAVEN WITH DUAL LIVING POTENTIAL

Nestled in an exclusive cul-de-sac of Tallai, this expansive 58.5 square two-storey family sanctuary with a versatile floor plan and multiple entertaining zones is set on 8,123sqm (approx) parcel of land, complete with In-ground Pool, Floodlit Championship Tennis Court with the attraction of Horse Paddock + Stables.

Perfectly designed with light-filled & beautifully proportioned living with entertainer's kitchen featuring granite bench tops, floor to ceiling glass doors plus gracious crystal lighting entry, offers the ultimate luxury for families seeking their own private sanctuary including possible in law accommodation

The upper-level master retreat includes a deluxe en-suite, terrace and walk-in wardrobe. Five extra double sized bedrooms, including home office feature in this stunning designed family home Outdoor living is as much a part of the experience as indoor living, enjoyed on its expansive undercover patio and from the family room/games area on the lower level that sweeps effortlessly out to the generous lawns, pool and tennis court' is something special, positioned to enjoy privacy in one of Tallai's most desirable settings.

This home will impress even the most particular of buyers and the convenient location to the Motorway, Robina Town Centre, Train Station, Pony club and Private and Public schools is prime real-estate

The Features at a Glance:

Sandra Liebenberg // 0437081639




sandra@slpropertiesgc.com.au // www.slpropertiesgc.com.au



PRICE:
\$1,200,000

OPEN FOR INSPECTION:
N/A

FOR SALE

6  | 5  | 2 

19 TARAWARA AVENUE, TALLAI, QLD, 4213

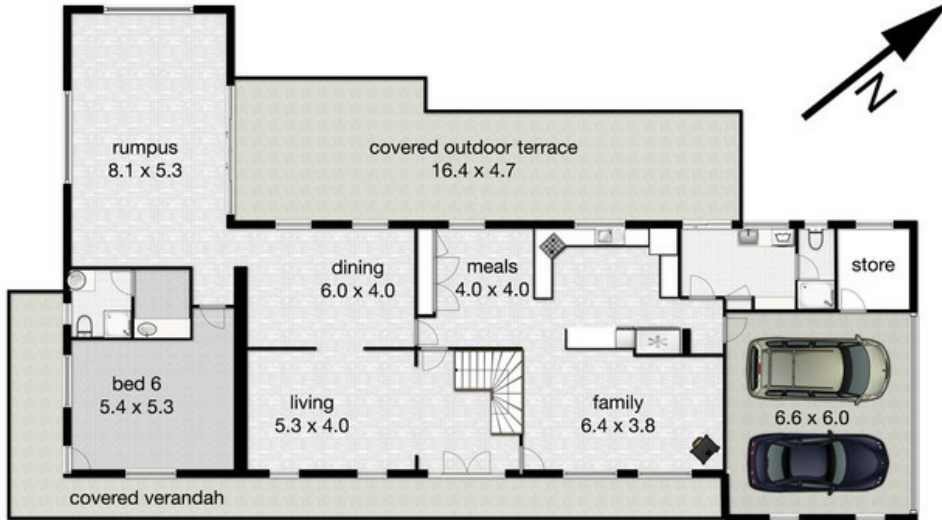


SANDRA LIEBENBERG
PROPERTIES GOLD COAST

19 Tarawara Avenue, Tallai

Land 8123m² | Garage 2 cars | Bedroom 6 | Bathrooms 4 | Living 4
Total approximate Residence Floor Area 544m²

 **Professionals**
Mudgeeraba



Whilst every attempt has been made to ensure the accuracy of the floor plan. Measurements of doors, windows rooms and any other items are approximate and no responsibility is taken for any error, omission or misstatement. This plan is for illustrative purposes only and should be used as such by any prospective purchaser.

Sandra Liebenberg // 0437081639

sandra@slpropertiesgc.com.au // www.slpropertiesgc.com.au