

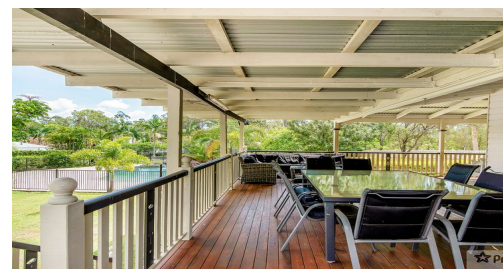
FOR SALE

5  | 2  | 2 

12 GROSVENOR COURT, WORONGARY, QLD, 4213



SANDRA LIEBENBERG
PROPERTIES GOLD COAST



CHARMING QUEENSLANDER

Located in a premier pocket of Worongary and oozing charm and character, this FIVE Bedroom family home is sure to impress. High ceilings, ornate cornices and wooden floors compliment the historic charm. Wide wrap around verandas make entertaining enjoyable and add to the ambience of the gorgeous Hinterland backdrop and sparkling in-ground pool. Offering potential purchases an impressive 4636m2 secure parcel of land with plenty of rolling green lawns for children and pets to play.

Providing space and privacy for all family members on three levels.

Property Features:

- Five Bedrooms Master with separate ensuite with spa
- Two Bathrooms
- Downstairs Teenage retreat / Games room
- Chef's kitchen with commercial oven and gas cooking and stone benchtops
- Double garage adjacent to house
- Electronic gated entry
- Ducted air conditioning
- Fire Place
- In-ground pool with water feature
- Wrap around Verandas
- Laundry chute from master bedroom
- Second drive way with concrete pad for extra parking and rear access for installation of shed if required

PRICE:
\$850,000

OPEN FOR INSPECTION:
N/A

Sandra Liebenberg // 0437081639

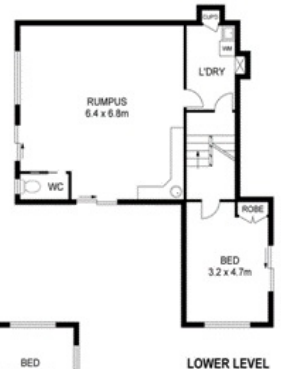
sandra@slpropertiesgc.com.au // www.slpropertiesgc.com.au



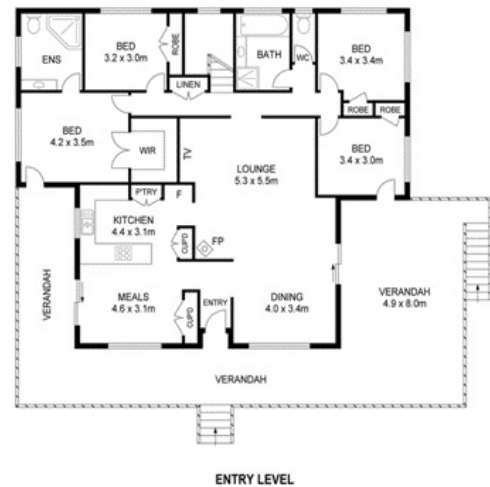
5 | 2 | 2



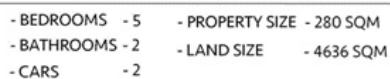
Professionals
Mudgeeraba



LOWER LEVEL



ENTRY LEVEL



Every attempt is made to ensure accuracy,
However all measurements are approximate
This Floor plan is for illustrative purpose
only & is not to scale.

Sandra Liebenberg // 0437081639

sandra@slpropertiesgc.com.au // www.slpropertiesgc.com.au