

Sold

3  | 2  | 1 

64/42-54 GEMVALE ROAD, REEDY CREEK, QLD, 4227



SANDRA LIEBENBERG
PROPERTIES GOLD COAST



HIGHLY SOUGHT AFTER SINGLE LEVEL VILLA - PET FRIENDLY

This impressive single level Villa built with privacy in mind and located in a sought-after gated complex will most certainly be perfect for the young couple, individual or astute investor. With 3 double bedrooms, all fitted with built in wardrobes, main with en-suite and the open plan layout offers spacious defined living extending to easy maintain fully fenced rear yard - Wonderful area that will allow you to easily entertain your family and friends in absolute comfort. PLUS a separate paved front entrance courtyard to sit with that morning coffee!!

Internal access to double garage with potential parking for another 1 car and set in a popular location of absolute convenience to shops, cafes, schools, transport and main shopping centre. This home will certainly tick all the boxes.

Features:

- . Villa built for privacy and features spacious living area
- . Excellent kitchen with dishwasher and lots of cupboard space.
- . Elevated rear court yard - FULLY FENCED for children and pets
- . 3 large bedrooms master with en-suite
- . Single garage with internal access

PRICE:
\$362,000



OPEN FOR INSPECTION:
N/A

Sandra Liebenberg // 0437081639

sandra@slpropertiesgc.com.au // www.slpropertiesgc.com.au



Sold

3  | 2  | 1 

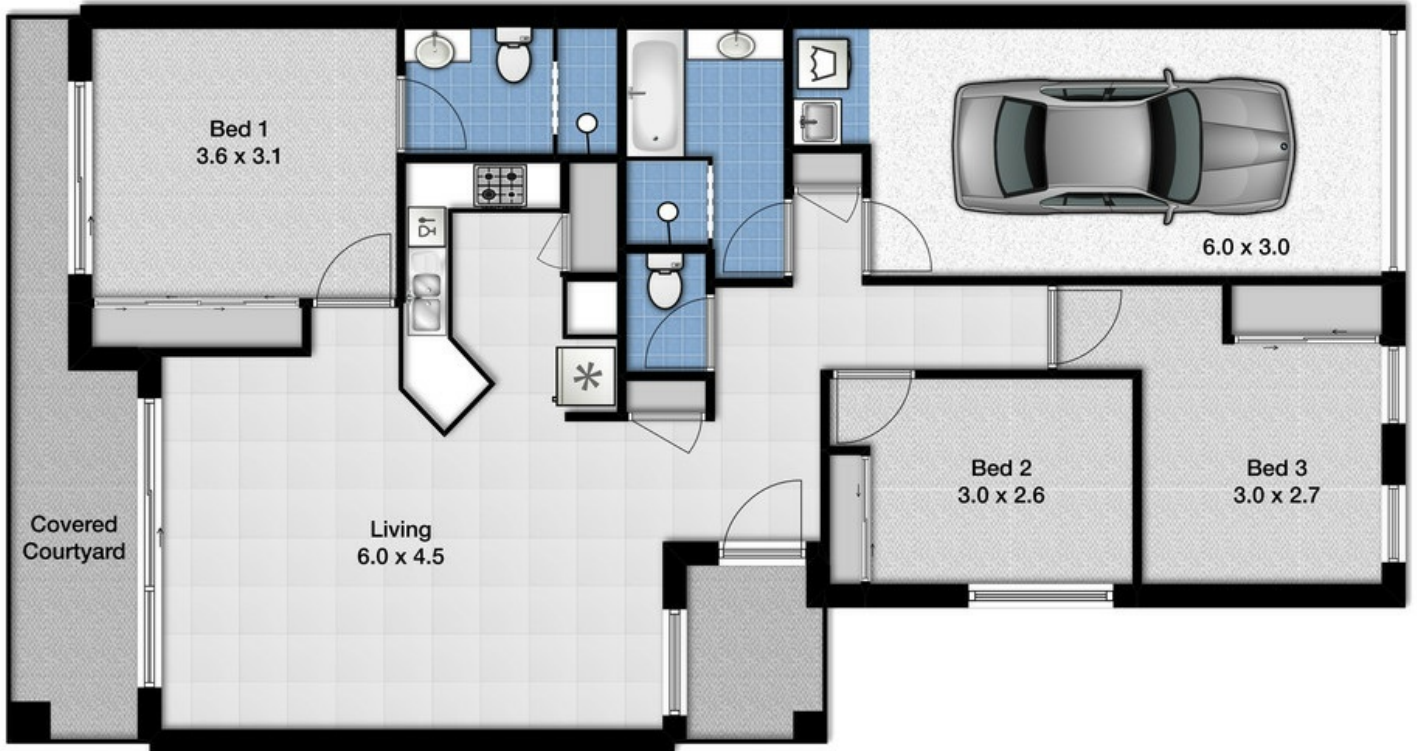
64/42-54 GEMVALE ROAD, REEDY CREEK, QLD, 4227



SANDRA LIEBENBERG
PROPERTIES GOLD COAST

Villa 64 42-54 Gemvale Road, Reedy Creek

Land 731m² | Bedroom 3 | Bathrooms 2 | Living 1 | Garage 1
Total approximate covered Floor Area 124m²



Whilst every attempt has been made to ensure the accuracy of the floor plan. Measurements of doors, windows rooms and any other items are approximate and no responsibility is taken for any error, omission or misstatement. This plan is for illustrative purposes only and should be used as such by any prospective purchaser.

Sandra Liebenberg // 0437081639

sandra@slpropertiesgc.com.au // www.slpropertiesgc.com.au