


# FOR SALE

5  | 2  | 5 

4A CROMWELL COURT, TALLAI, QLD, 4213

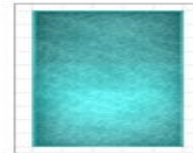


**SANDRA LIEBENBERG**  
PROPERTIES GOLD COAST

## 4a Cromwell Court, Tallai

Land 4058 m<sup>2</sup> | Garage 5 cars | Bedroom 5 | Bathrooms 3 | Living 3  
Total approximate Covered Floor Area 42 squares (390sqm<sup>2</sup>)

 **Professionals**  
Mudgeeraba



Basement  
Storage  
Below Covered  
Terrace  
5.3 x 5.3

Whilst every attempt has been made to ensure the accuracy of the floor plan. Measurements of doors, windows rooms and any other items are approximate and no responsibility is taken for any error, omission or misstatement. This plan is for illustrative purposes only and should be used as such by any prospective purchaser.



## NEW DESIGNER HOME WITH HIGH END FINISHES !!

This architecturally designed new split level home has been built to perfection by incorporating the core fundamentals of a truly contemporary and functional family home. Nestled on a 4058sqm fully usable landscaped block with hinterland views, lush lawns and mature trees.

Privately positioned in a quiet cul-de-sac and boasting neutral colour schemes, you will appreciate the space and form this stunning residence provides, perfectly designed to accommodate families of all ages and sizes.

Built for entertaining with hardwood timber floors throughout, high ceilings, clean lines and glass expanses. The spacious lower level open plan living, dining and kitchen area captures a profusion of natural light, opening via glass stacking doors onto a spacious outdoor entertaining area with amazing hinterland views and spectacular elevated swimming pool.

Further to the lower level is the 5th bedroom, media room, powder room and master suite with tremendous space, en suite with dual vanities and a functional layout with the wow factor walk-in robe.

With three spacious bedrooms on the upper level, main bathroom with frameless shower, bath and separate toilet and children's retreat offering the perfect zone for family living.

The 6x9 meter, 3 bay shed is sure to impress the motor enthusiast with an abundance of space to park vehicles, caravan, boats etc.

**PRICE:**  
\$1,200,000




**OPEN FOR INSPECTION:**  
N/A

# Sandra Liebenberg // 0437081639

sandra@slpropertiesgc.com.au // [www.slpropertiesgc.com.au](http://www.slpropertiesgc.com.au)



# FOR SALE

5  | 2  | 5 

4A CROMWELL COURT, TALLAI, QLD, 4213

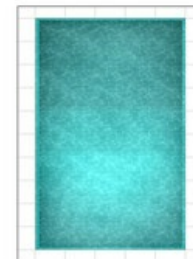
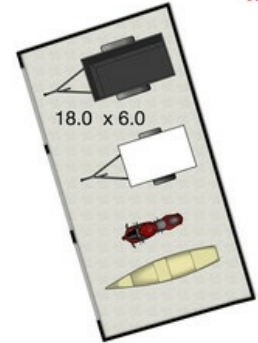
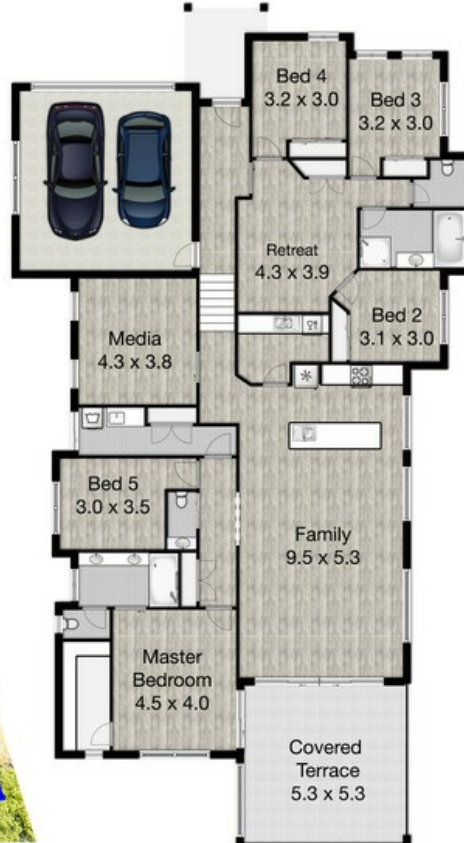
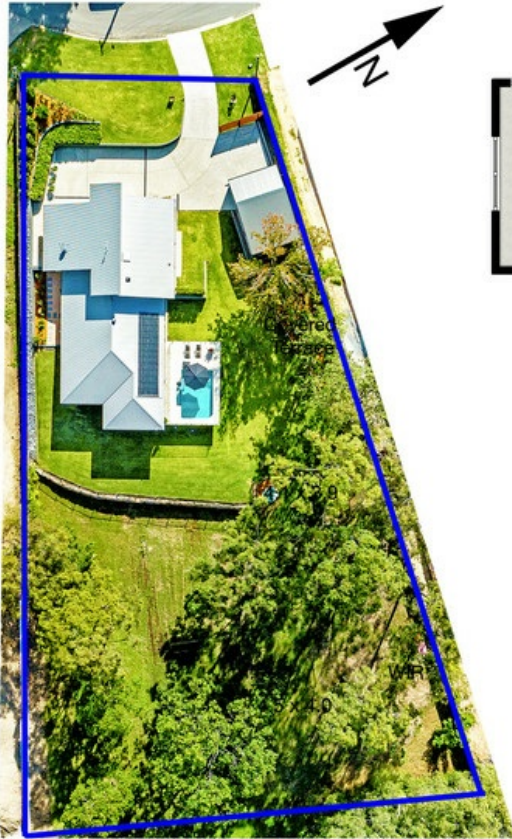


**SANDRA LIEBENBERG**  
PROPERTIES GOLD COAST

## 4a Cromwell Court, Tallai

Land 4058 m<sup>2</sup> | Garage 5 cars | Bedroom 5 | Bathrooms 3 | Living 3  
Total approximate Covered Floor Area 42 squares (390sqm<sup>2</sup>)

 **Professionals**  
Mudgeeraba



Basement  
Storage  
Below Covered  
Terrace  
5.3 x 5.3

Whilst every attempt has been made to ensure the accuracy of the floor plan. Measurements of doors, windows rooms and any other items are approximate and no responsibility is taken for any error, omission or misstatement. This plan is for illustrative purposes only and should be used as such by any prospective purchaser.

**Sandra Liebenberg // 0437081639**

sandra@slpropertiesgc.com.au // [www.slpropertiesgc.com.au](http://www.slpropertiesgc.com.au)