




FOR SALE

7  | 4  | 4 

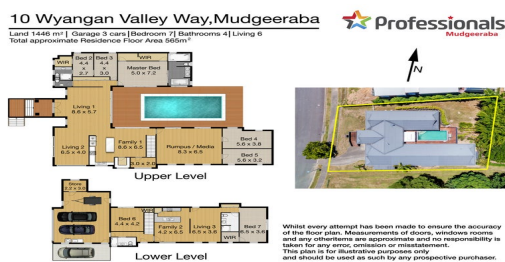
10 WYANGAN VALLEY WAY, MUDGEERABA, QLD, 4213



SANDRA LIEBENBERG
PROPERTIES GOLD COAST



★ Professional



MASSIVE DUAL LIVING HOME IN CLOVER HILL ESTATE

This amazing residence is truly a world class property that must be inspected to appreciate the lifestyle and luxury on offer.

Characterised by its fine dual-family credentials and vast flowing living areas with an abundance of natural light throughout, this extraordinary 7 bedroom residence balances sophisticated contemporary style with enhanced functionality, offering a lifestyle that is often sought but rarely found.

Sprawled across a 1,446 m² parcel of land this enclave is a natural choice for executive home-seekers where privacy, ambience and location to some of the best private and public schools are only minutes away

The Grounds -

Positioned alongside a natural parkland this lavish home with manicured gardens and a variety of established shrubs and ground cover including ornamental front yard water feature is further complemented with abundant storage space and a triple lock-up garage plus workshop
Extra off street visitor parking plus 2x3 Litre Water Tanks will impress

Home Features and Inclusions -

Highest quality construction with Balinese influence

This home delivers stunning, innovative two-storey living at its finest. The kitchen is a masterpiece in itself with large island bench, walk in pantry and ample storage options with meals area leading to spacious multiple living areas including banquet-sized formal dining - Not to mention the superb floor to ceiling glass doors showcasing the centred sparkling in-around swimming pool creating

PRICE:
Auction

OPEN FOR INSPECTION:
N/A

Sandra Liebenberg // 0437081639

sandra@slpropertiesgc.com.au // www.slpropertiesgc.com.au



FOR SALE

7 | 4 | 4

10 WYANGAN VALLEY WAY, MUDGEERABA, QLD, 4213

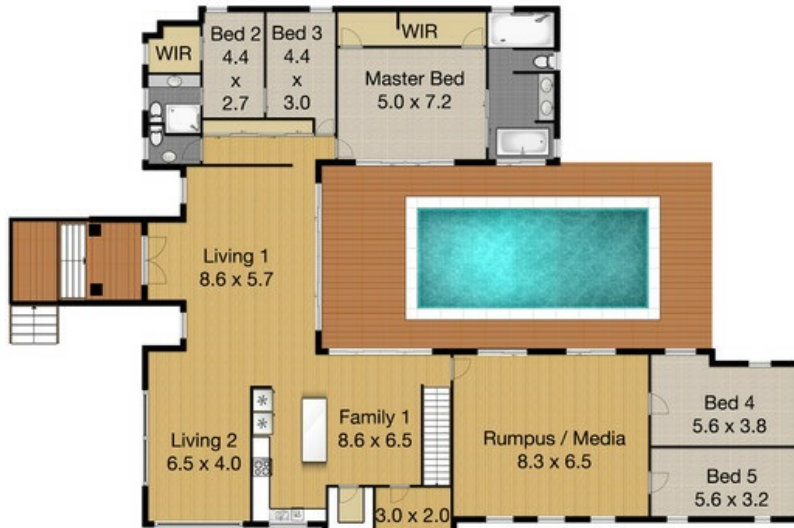


SANDRA LIEBENBERG
PROPERTIES GOLD COAST

10 Wyangan Valley Way, Mudgeeraba

Land 1446 m² | Garage 3 cars | Bedroom 7 | Bathrooms 4 | Living 6
Total approximate Residence Floor Area 565m²

Professionals
Mudgeeraba



Upper Level



Lower Level



Whilst every attempt has been made to ensure the accuracy of the floor plan. Measurements of doors, windows rooms and any other items are approximate and no responsibility is taken for any error, omission or misstatement. This plan is for illustrative purposes only and should be used as such by any prospective purchaser.

Sandra Liebenberg // 0437081639

sandra@slpropertiesgc.com.au // www.slpropertiesgc.com.au