




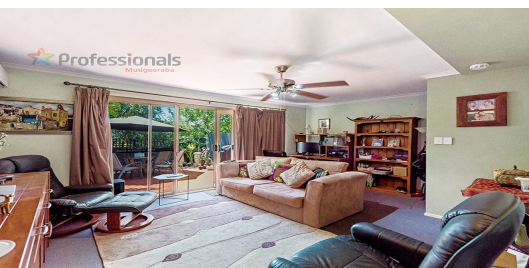
FOR SALE

2  | 1  | 1 

3/4 SHERWOOD CLOSE, MUDGEERABA, QLD, 4213



SANDRA LIEBENBERG
PROPERTIES GOLD COAST



ATTENTION INVESTORS - ALMOST 7% GROSS RETURN!!

This 2 bedroom townhouse is located in the high demand suburb of Mudgeeraba with an existing tenant wishing to stay on.

Within walking distance to Mudgeeraba Village shopping centre, other features :

- Easy flow from indoor to outdoor living
- 2 good size bedrooms
- Master bedroom with 2-way bathroom
- Lounge area opens to outdoor patio
- Good size kitchen and dining areas
- Single garage
- Internal laundry
- Minutes to public transport
- Close to M1, Robina shopping precinct and hospital

PRICE:
\$300,000

OPEN FOR INSPECTION:
N/A

Sandra Liebenberg // 0437081639

sandra@slpropertiesgc.com.au // www.slpropertiesgc.com.au

