




FOR SALE

3  | 1  | 1 

15/84 FRANKLIN DRIVE, MUDGEERABA, QLD, 4213



SANDRA LIEBENBERG
PROPERTIES GOLD COAST



STUNNING LIGHT-INFUSED TOWNHOUSE IN GREAT LOCATION - PET-FRIENDLY

Don't miss this unique opportunity, call or email to register for your private inspection!

PRICE:
\$300,000

Excellent convenience and security are perfectly matched by space and style in this contemporary designed townhouse that seamlessly flows onto a spacious deck that spans the whole length of the home, making it a perfect place for entertaining guests and relaxing in the spring and summer months with family.

Due to its stylish presentation, quality appointments and leafy rear outlook, this three-bedroom townhouse makes a great buying opportunity for young professionals, downsizers and investors alike. While the peaceful and private setting secluded to the rear of the tightly held complex offers an uplifting sense of peace and privacy.

Conveniently located within an easy walk to Mudgeeraba Town centre and popular eateries plus only minutes away to world class Robina Town Centre shopping and M1 will make this location one of the best in the area

OPEN FOR INSPECTION:
N/A

The list of features surely to impress:




- Pet friendly and tastefully renovated interiors
- Indoor/outdoor living and entertaining areas with leafy outlook and cool breezes
- Private and large rear deck perfect for relaxing
- Three generous bedrooms, 2 with robes, main includes walk through robe and balcony
- Designer Bathroom with tub and ultra-chic fittings throughout
- Modern kitchen with breakfast bar and quality appliances
- Powder room for guests and your convenience

Sandra Liebenberg // 0437081639

sandra@slpropertiesgc.com.au // www.slpropertiesgc.com.au



FOR SALE

3  | 1  | 1 

15/84 FRANKLIN DRIVE, MUDGEERABA, QLD, 4213

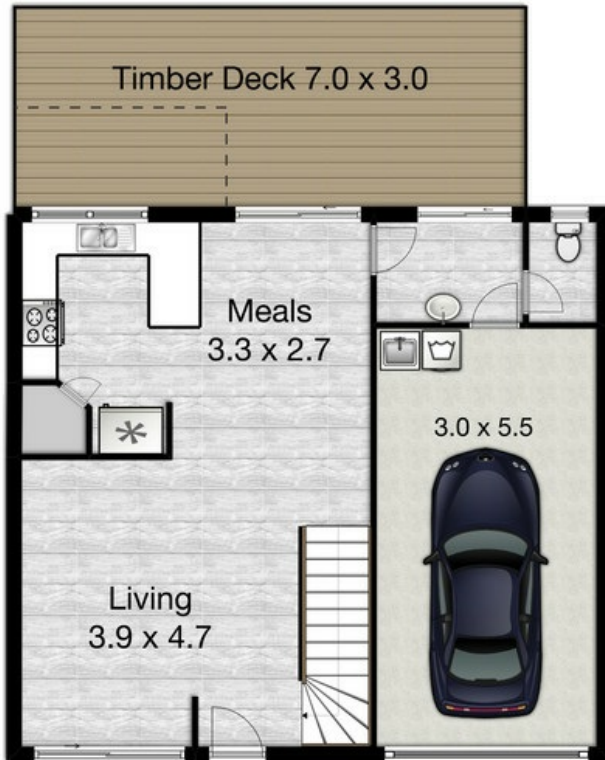


SANDRA LIEBENBERG
PROPERTIES GOLD COAST

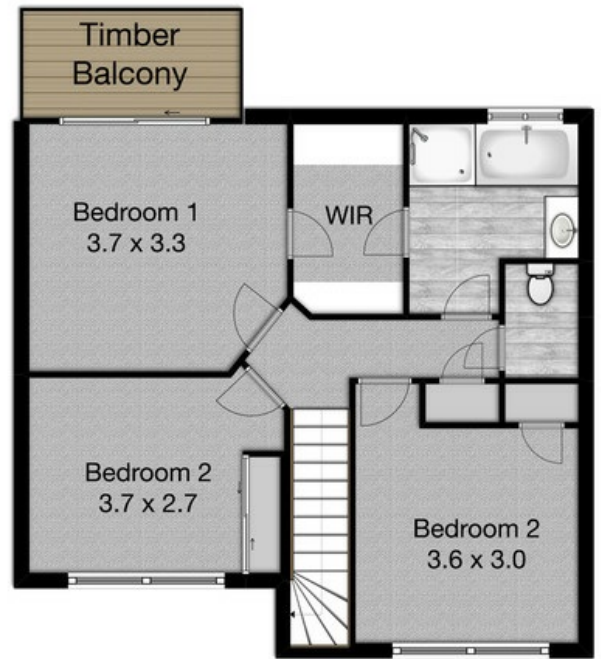
Unit 15/84 Franklin Drive, Mudgeeraba

 **Professionals**
Mudgeeraba

Land 184m² | Garage 1 car | Bedroom 3 | Bathrooms 1 | Living 1
Approximate Upper Floor Area 77m² - Lower Floor Area 128m²
Total Approximate Floor Area 205m²



Ground Floor



1st Floor

Whilst every attempt has been made to ensure the accuracy of the floor plan. Measurements of doors, windows rooms and any other items are approximate and no responsibility is taken for any error, omission or misstatement. This plan is for illustrative purposes only and should be used as such by any prospective purchaser.

Sandra Liebenberg // 0437081639

sandra@slpropertiesgc.com.au // www.slpropertiesgc.com.au