

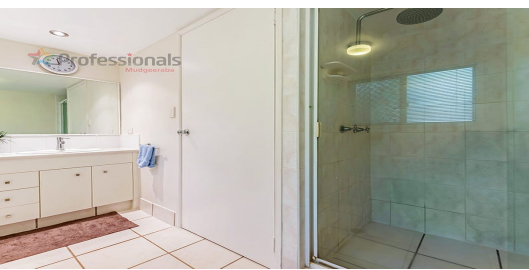
# Sold

3  | 2  | 1 

21/8-12 SHERWOOD CLOSE, MUDGEERABA, QLD, 4213



**SANDRA LIEBENBERG**  
PROPERTIES GOLD COAST



## IMPRESSIVE TOWNHOUSE

Clean lines, natural light and excellent proportions define this stunning town home conveniently tucked away in a peaceful enclave in the heart of Mudgeeraba and within an easy stroll to the vibrant village shops and restaurants

Enjoying a high-set position and delivering district views from the laid-back balcony; this three bedroom home is the ideal purchase for the astute investor or the home buyer looking for the lifestyle and convenience of location

Featuring light filled living with galley kitchen and entertaining space to enjoy, plus two convenient downstairs bedrooms, a spacious fully tiled bathroom and master sits comfortably on the next level with the convenience of the second bathroom ensuring that the home delivers on every living need.

Spacious foyer upon entry and blessed with a rear courtyard for those quiet moments, immediately engages with extra entertaining space and delivers immediate family enjoyment A GREAT OPPORTUNITY NOT TO BE MISSED! Call now!!

### Features:

- Sun-filled spacious living with private balcony and district views
- Three good size bedrooms with built-in wardrobes
- 2 bathrooms
- Single lock up garage with internal access, plus visitor parking
- Spacious Foyer with direct access to rear courtyard
- Excellent location with only minutes to all shopping

**PRICE:**  
\$360,000

**OPEN FOR INSPECTION:**  
N/A

# Sandra Liebenberg // 0437081639

sandra@slpropertiesgc.com.au // [www.slpropertiesgc.com.au](http://www.slpropertiesgc.com.au)

