


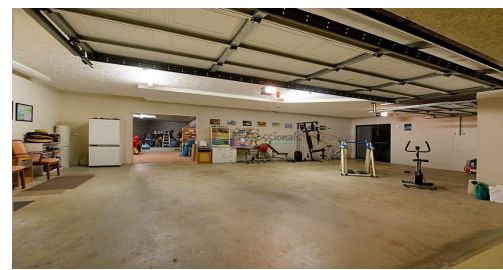
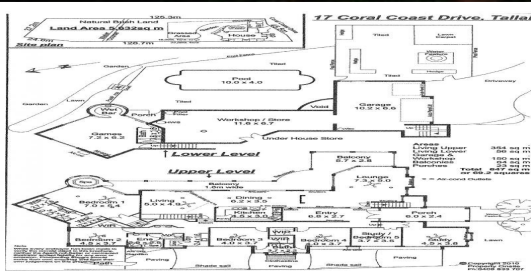
FOR SALE

5  | 4  | 5 

17 CORALCOAST DRIVE, TALLAI, QLD, 4213



SANDRA LIEBENBERG
PROPERTIES GOLD COAST



HUGE FAMILY ESTATE WITH GOLD COAST SKYLINE VIEWS

5 BED, 4 BATH, 2 STUDY, 6 CAR, POOL, LAND 5,632m2

WARMTH, SOPHISTICATION and commanding an exceptional street presence, this stunning luxury acreage estate provides the ultimate family home with extraordinary proportions, magnificently high ceilings and sweeping vistas of the gold coast skyline.

Wrapped in terraces and decks, this grand home enjoys elegant entertaining areas for every occasion, formal living flows to relaxed over-sized family entertaining areas with floor-to-ceiling glass that flow freely to the surrounding decks taking full advantage of the shimmering panoramas and spectacular views.

A lower level games room gives breadth to a family living environment offering easy access to the sparkling in ground pool.

The home's accommodation is delivered through, five generous bedrooms positioned separately and away from the entertaining portion of the home and provides peaceful havens to rest and restore. The generous master embraces absolute privacy with unsurpassed style and elegance including deep spa and terrace access.

Second, third and fourth bedroom are truly generous in size with built-in robes, while each of the bathrooms are fresh and private.

The spacious and inspiring office is perfectly located and will surely please.

A double driveway includes triple garage, massive workshop with internal storage plus rare gated side access for more vehicles / boat / caravan or extra useable land surrounded by manicured

PRICE:

\$1,300,000

OPEN FOR INSPECTION:

N/A

Sandra Liebenberg // 0437081639

sandra@slpropertiesgc.com.au // www.slpropertiesgc.com.au

