

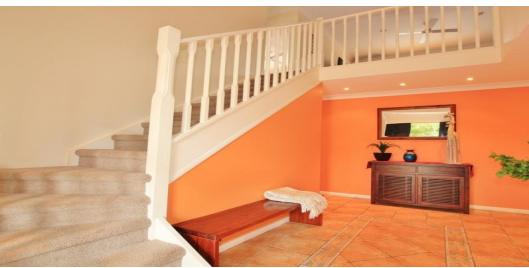
FOR SALE

5  | 3  | 2 

4 MILVERTON CLOSE, MUDGEERABA, QLD, 4213



SANDRA LIEBENBERG
PROPERTIES GOLD COAST



THE PERFECT FAMILY HOME

5 BED, 3 BATH, 3 LIVING

Nestled at the end of a quiet cul-de-sac sits this large family residence offering three separate living areas over two levels plus Spacious Kitchen, Home office, 4/5 Bedrooms, and BEST OF ALL, completely private and low maintenance rear garden.

Perfectly positioned in the family friendly Mudgeeraba and the perfect functional floor plan for the growing family with a large stylish kitchen positioned in the heart of the home and open to the formal lounge/dining on one side and casual dining plus media room/guest accommodation on the other, creating relaxed living zones in this ideally located family home.

TO READ MORE:

- . Tiled entry way welcoming you into a formal living area or perhaps look right and appreciate the ample study.
- . Large open plan kitchen complete with server and positioned right in the mix of the excitement, overlooking the meals and family rooms a like
- . A separate entertaining room is also featured this may be the perfect billiards room or perhaps install that dream home theatre you have always wanted.
- . Step outside to the private undercover entertaining patio with loads of potential to install your pool for summer
- . Venture upstairs and you will find no less than 4 well proportioned bedrooms with built-ins and kind size master with en-suite and walk-in robe

PRICE:

\$600,000

OPEN FOR INSPECTION:

N/A

Sandra Liebenberg // 0437081639

sandra@slpropertiesgc.com.au // www.slpropertiesgc.com.au

