




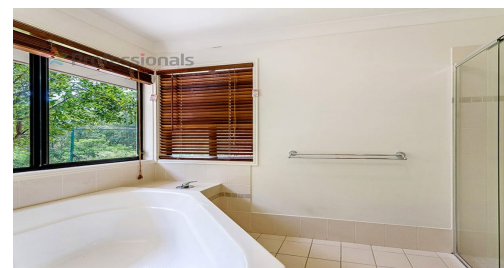
FOR SALE

5  | 4  | 2 

300 SAN FERNANDO DRIVE, WORONGARY, QLD, 4213



SANDRA LIEBENBERG
PROPERTIES GOLD COAST



TIMELESS BEAUTY, WITH MASSIVE SHED AND OFFICE

Nestled amongst magnificent acreage residences in a neighbourhood renowned for its exceptional lifestyle, this large family home defined by formal and informal living with high ceilings an abundant of natural light, is a perfect representation of a sophisticated acreage lifestyle with its own very distinctive feature.

Wonderfully equipped for the family chef an expansive and thoughtfully designed central kitchen, ensures effortless flow to generous entertainer's zones and terrace through floor-to-ceiling glass doors and enjoys an abundance of privacy with serene elevated outlook. The accommodation wing of this home includes the master suite with all facilities one would expect in a large home. Three further generous bedrooms and bathrooms plus versatile accommodation with separate entrance, is everything a growing family needs.

Exceptionally designed and abundantly spacious with double lock up garage and internal access, is quite the substantial property. Plus, 3 bay shed with office accommodation lends itself to a home businesses or large storage, so working from home won't be a problem, and all within minutes to the M1, Private and Public schools plus Shopping Centres

Features:

Approx 40 Square home on approx 1.33Ha
Massive (17.5m x 7m) Shed includes 3-phase plus OFFICE, Great for car collectors or truckies
10 kW Solar power system installed
Ducted airconditioning throughout the home

PRICE:
\$800,000

OPEN FOR INSPECTION:
N/A

Sandra Liebenberg // 0437081639

sandra@slpropertiesgc.com.au // www.slpropertiesgc.com.au

