




# FOR SALE

6  | 3  | 2 

19 AYLESHAM DRIVE, BONOGIN, QLD, 4213



**SANDRA LIEBENBERG**  
PROPERTIES GOLD COAST



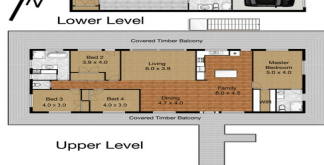
 **Professional's**  
Mudgeeraba

19 Aylesham Drive, Bonogin

Land 5209m<sup>2</sup> | Garage 2 cars | Bedroom 6 | Bathroom 2 | Living 3

Approximate Upper Floor Area 370m<sup>2</sup> | Lower Floor Area 270m<sup>2</sup>

Total Approximate Floor Area 485m<sup>2</sup>



 **Professional's**  
Mudgeeraba



Whilst every attempt has been made to ensure the accuracy of the floor plan, measurements of blocks, window openings and any other items are approximate and no responsibility is taken for any error, omission or misstatement. In fact, this plan is for illustrative purposes only and should be used as such by any prospective purchaser.



## HAMPTONS STYLE, VIEWS, DUAL LIVING AND HORSES

What more do you need???

Dual living and family excellence is elevated to new heights in this newly renovated Hampton style residence with a beautiful façade boasting a variety of authentic architectural features and light filled living spaces with expansive rural views from almost every room

The hub of the home, located upon entry, include formal dining and living balanced by relaxed casual kitchen area to provide many opportunities for families, friends and guests to relax and entertain both inside and out

Large glass sliding doors allow the spectacular views to take centre stage and the high ceilings create a sense of light and spaciousness within the home

A luxury master with overlarge en-suite and walk-in robe plus five other bedrooms, 2 extra bathrooms are all stunningly and spaciouly designed

Spread across two beautifully appointed levels with wraparound entertaining verandah, this impeccably renovated home also encompasses a 2 bedroom self-contained accommodation with great success of unsurpassed living, ideal for every family where privacy, size and style are important or extra room for guests

Positioned on approx 5209m<sup>2</sup> of usable land, plenty of room for the horses with the added bonus of a picture-perfect country setting

Features:

- . Family entertainer with expansive leafy views
- . The home includes a stunning array of internal and external dining and leisure areas. with indoor

**PRICE:**  
**\$900,000**

**OPEN FOR INSPECTION:**  
**N/A**

**Sandra Liebenberg // 0437081639**

sandra@slpropertiesgc.com.au // [www.slpropertiesgc.com.au](http://www.slpropertiesgc.com.au)

