




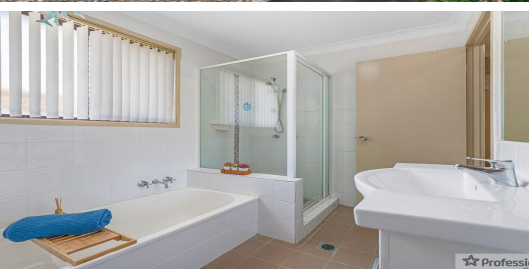
FOR LEASE

2  | 1  | 1 

1/11 JESSICA COURT, ARUNDEL, QLD, 4214



SANDRA LIEBENBERG
PROPERTIES GOLD COAST



SPACIOUS UNIT IN AN AMAZING LOCATION

With huge undercover entertaining, this spacious home is tucked away in a quiet cul-de-sac and immaculately maintained, showcases a calm organic colour scheme of creamy white and sophisticated mottle tones displaying a sense of generously proportioned open plan living and dining.

Two bedrooms with built-in-robres, ceiling fans and a well-appointed bathroom plus converted single garage for extra living, leads to a private rear yard with small shed and level lawn.

Boasting a convenient location in the heart of Arundel, this well presented unit is within a short distance to public transport, shopping and top schooling options , child care centres and hospitals is not going to last long.

Property Features:

- *2 good sized bedrooms both with built in robes and ceiling fans
- *Main room has air-conditioning and direct access to the bathroom.
- *2-way bathroom including bathtub
- *Separate toilet
- *Modern floorboards throughout the whole property
- *Air-conditioning in spacious lounge room and ceiling fan
- *Kitchen with stainless steel appliances
- *Single lock up garage with internal access and direct access to the exterior of the property
- *Garden shed
- *Huge entertaining area with LED lighting and beautiful landscaping features
- *Colourbond fencing for maximum privacy

PRICE:

\$500 per week

OPEN FOR INSPECTION:

N/A

Sandra Liebenberg // 0437081639

sandra@slpropertiesgc.com.au // www.slpropertiesgc.com.au

