



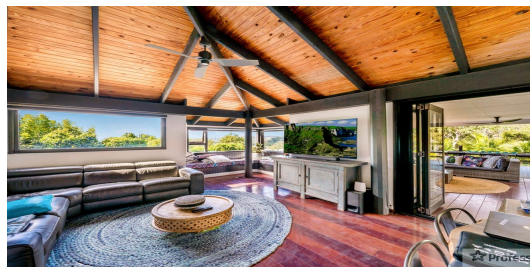
FOR LEASE

4  | 3  | 2 

19 AMULLA COURT, MUDGEERABA, QLD, 4213



SANDRA LIEBENBERG
PROPERTIES GOLD COAST



THE ULTIMATE TREE HOUSE ESCAPE & IT'S HORSE FRIENDLY!

Our agency does not accept 1form applications - all applications are to be completed using 2APPLY.

Set on roughly 1ha of land with beautiful hinterland views, this welcoming residence has been meticulously renovated with family at the heart and a stunning design flows over three generously well proportioned levels.

As you walk through the front door you can't help but appreciate the magnificent use of old and new, from the high exposed beam ceilings, stunning kitchen and huge entertaining deck you realise you're in a unique home. Energy efficient with Solar and Tesla power wall!

Full of warmth, character and charm this completely private home features 4 bedrooms, master with en-suite and walk in robe, open plan living with fire place and separate formal lounge opening onto the huge deck capturing the picturesque bush views. The well equipped kitchen features ample bench and cupboard space complementing old and new with the raked beam ceiling and opening on to the outdoor kitchen area.

The lower level provides the perfect teenage retreat with huge double bedroom, own personal bathroom complete with spa bath and separate access.

Completing the picture is the 1ha of land complete with pool, children's play area and fenced horse paddocks with arena and tack shed this property really does have it all!

PRICE:
\$1,000

OPEN FOR INSPECTION:
N/A

Sandra Liebenberg // 0437081639

sandra@slpropertiesgc.com.au // www.slpropertiesgc.com.au

