

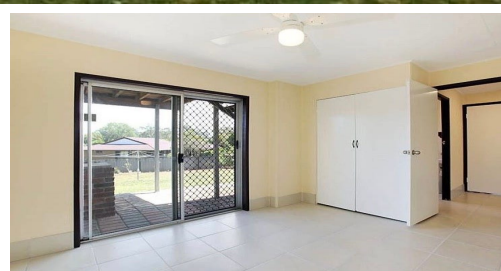
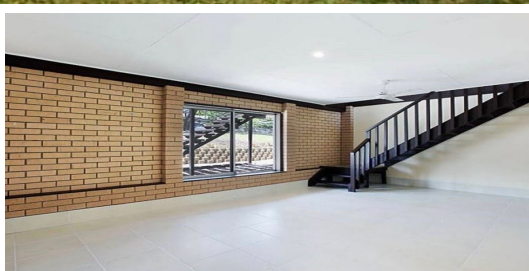
FOR LEASE

4  | 2  | 2 

18 GLASS STREET, ASHMORE, QLD, 4214



SANDRA LIEBENBERG
PROPERTIES GOLD COAST



SPLIT LEVEL HOME IN AMAZING LOCATION

PLEASE NOTE OUR AGENCY DOES NOT USE 1FORM PLEASE APPLY USING THE 2APPLY LINK SENT WHEN YOU REGISTER YOUR DETAILS

This double level home is located close to the heart of Ashmore and has features that suit everyone! Just one street away from Trinity Lutheran College, Ashmore Plaza, Royal Pines Shopping centre plus many other schools, shops and restaurants.

Features Include:

UPSTAIRS:

- * 3 bedrooms - all with ceiling fans and built in robes
- * Bathroom with full bath
- * Separate toilet
- * Kitchen with ample storage and dishwasher.
- * Tiled open plan dining/living with air-con air conditioning
- * Timber deck overlooking the backyard plus another deck at the front of the property

DOWNSTAIRS:

- * 1 bedroom with built-in robe and ceiling fan.
- * Bathroom.
- * Tiled living room.

Enjoy the security of the fully fenced yard. double lock up garage with internal access. quick

PRICE:
\$650 per week

OPEN FOR INSPECTION:
N/A

Sandra Liebenberg // 0437081639

sandra@slpropertiesgc.com.au // www.slpropertiesgc.com.au

