

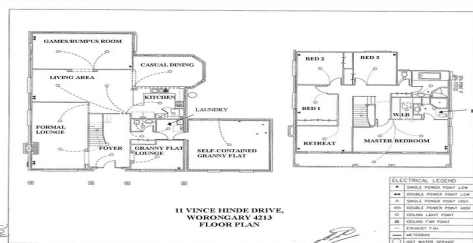
FOR LEASE

5  | 3  | 2 

11 VINCE HINDE DRIVE, WORONGARY, QLD, 4213



SANDRA LIEBENBERG
PROPERTIES GOLD COAST



IMPECCABLY RENOVATED WITH NO STONE UNTOUCHED!

****DO NOT ENTER THE PROPERTY, TRADESMAN ONSITE****

PLEASE NOTE OUR AGENCY DOES NOT USE 1FORM PLEASE APPLY USING THE 2APPLY LINK SENT WHEN YOU REGISTER YOUR DETAILS

PRICE:
\$1,150

Proudly perched at the end of a tree lined drive is the spacious 5 Bedroom family home which has been completely renovated to the highest level inside and out! Splendid in proportions over two vast levels of interconnected living spaces and designed for large-scale entertaining with open plan living, brand new well-appointed kitchen with premium fittings and a handy breakfast bar promises effortless entertaining and a superior lifestyle suited to both families and professional couples alike.

OPEN FOR INSPECTION:
N/A

The upstairs features a luxuriously and sophisticated sized master creating a splendid parents retreat that spills seamlessly to a large covered balcony designed to capture the stunning outlook as well as, your own private space and tranquillity. Three additional bedrooms share this level, with built-in-robos and an open plan study zone provides a quiet work area.

Ground floor is vast in its mix of formal and informal living areas providing each family member a retreat. This level also contains a self contained granny flat completed with brand new full size kitchen and bathroom achieves the optimal balance of superb family living and convenience.

With no stone untouched this "New" home is ready for its first tenants to call it home!



Sandra Liebenberg // 0437081639

sandra@slpropertiesgc.com.au // www.slpropertiesgc.com.au