



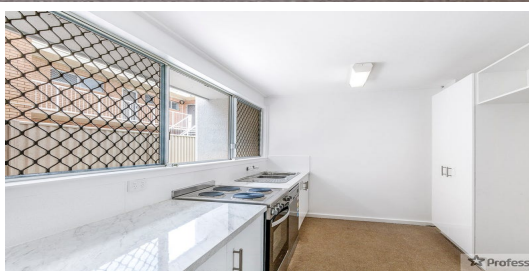
FOR LEASE

2  | 1  | 1 

12/9 WEEMALA STREET, SURFERS PARADISE, QLD, 4217



SANDRA LIEBENBERG
PROPERTIES GOLD COAST



PRIME LOCATION WITH EVERYTHING AT YOUR DOORSTEP!

This neat and tidy townhouse is located within the heart of Surfers Paradise just over the Chevron Bridge. Walking distance to the beach, shopping centres, restaurants and many of Gold Coast's Top Attractions.

Lounge by the shared pool on those hot summer days as your back door is just a few steps away. This property won't last long!

Features Include:

- *2 x Bedrooms with ceiling fans and built-in robes
- *Bathroom with separate toilet and combined laundry
- *Spacious living/dining area that opens up to the pool
- *Kitchen with plenty of storage
- *Dishwasher
- *Freshly painted
- *Brand new carpet throughout
- *Shared in-ground swimming pool
- *Outdoor Entertaining area
- *1x undercover carspace and on street parking

WANT TO INSPECT? PRIVATE & VIRTUAL INSPECTIONS AVAILABLE
1. Click on the "BOOK AN INSPECTION/ REQUEST AN INSPECTION" button

Sandra Liebenberg // 0437081639

sandra@slpropertiesgc.com.au // www.slpropertiesgc.com.au

PRICE:
\$400 per week

OPEN FOR INSPECTION:
N/A

