



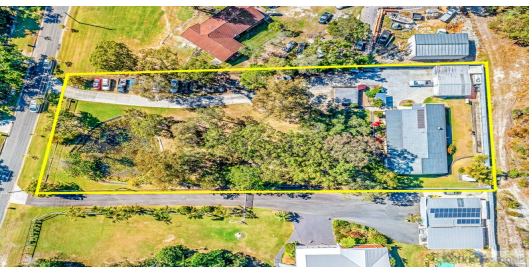
FOR LEASE

4  | 2  | 5 

28 KINGSWAY DRIVE, MOLENDINAR, QLD, 4214



SANDRA LIEBENBERG
PROPERTIES GOLD COAST



HUGE FAMILY HOME!

Set on a beautiful 4378m2 block this immaculate four bedroom + office family home ticks all the boxes for the perfect inner-city acreage retreat to escape from it all....

Key features include:

- * Separate living areas for all the family to enjoy
- * Spacious kitchen with an ampl storage & dishwasher
- * Four big bedrooms
- * Huge Master retreat with office, walk-in robe & ensuite
- * Additional large separate office to the rear of the over-sized double garage
- * Ginormous Titan 49m2 (7m x 7m) steel frame workshop shed plus extra storage area for boat, caravan, trailer etc
- * Additional Double & Single carport
- * Giant covered outdoor entertaining terrace overlooking the ranch and boasting the highly desirable North-Easterly aspect overlooking picturesque dam to the front
- * Fully fenced with gated entry offering security and plenty of open space for the whole family to relax

Don't delay only minutes to everything & easy access to the M1 direct to Brisbane or Coolangatta ... inspect today to see all this property has to offer

Rent - \$790
Bond -\$3160

PRICE:

\$790 per week

OPEN FOR INSPECTION:

N/A

Sandra Liebenberg // 0437081639

sandra@slpropertiesgc.com.au // www.slpropertiesgc.com.au

