

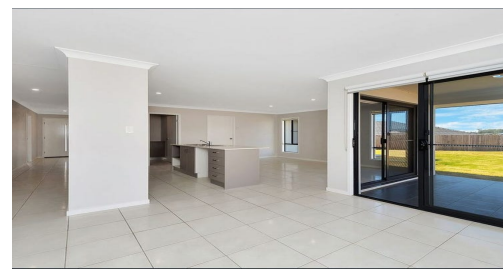
# FOR LEASE

4  | 2  | 2 

103 WOLLOMBI AVENUE, ORMEAU HILLS, QLD, 4208



**SANDRA LIEBENBERG**  
PROPERTIES GOLD COAST



## SLEEK, CONTEMPORARY LIVING IN A CONVENIENT ADDRESS.

Impeccably presented with contemporary interiors and superior inclusions throughout, this light filled chic family home with a selection of stylish living and entertainment spaces and massive backyard, offer the ultimate spacious environment for year-round family living and entertaining.

### Features:

- \* 4 Good size Bedrooms all with built ins and ceiling fans;
- \* Master Bedroom with Walk in Robe and Ensuite;
- \* Large Open Plan Lounge/Dining with separate Formal Lounge which can also be used as a Media/Rumpus Room or Study;
- \* New air-conditioning units to lounge and main bedroom;
- \* Modern Kitchen with Stainless steel appliances and NEW Dishwasher,
- \* Covered Outside Patio area leading onto MASSIVE low maintenance fully fenced garden with complete privacy;
- \* Double Lock up Garage;
- \* Natural Gas supply
- \* Located in a Family friendly estate with parkland, football club, dog parks, walking paths and children's recreation areas.

Desirably positioned in one of Ormeau's most popular residential estates with easy access to the M1 & close to shops, schools and public transport this property has it all!

WANT TO INSPECT?

PRICE:  
\$520

OPEN FOR INSPECTION:  
N/A

# Sandra Liebenberg // 0437081639

sandra@slpropertiesgc.com.au // [www.slpropertiesgc.com.au](http://www.slpropertiesgc.com.au)

