



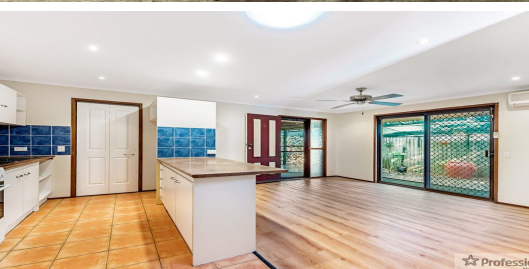
# FOR LEASE

2  | 1  | 1 

2/10 BOTANICAL DRIVE, LABRADOR, QLD, 4215



**SANDRA LIEBENBERG**  
PROPERTIES GOLD COAST



## POSITION, PRIVACY & PLENTY OF SPACE!

Recently painted and perfectly positioned close to Griffith university & Gold Coast University hospital this 2 Bedroom Duplex will not last long.

### PROPERTY FEATURES:

- \* Two spacious bedrooms with ceiling fans
- \* Open plan Kitchen, lounge, Dining with ceiling fan
- \* Family bathroom
- \* Low maintenance garden with undercover entertaining area
- \* Single lock up garage & garden shed

Located within minutes from Griffith University, Gold Coast University Hospital, local shops, Harbour Town Shopping Precinct with easy access to the Gold Coast G link light rail this property wont last long!

### WANT TO INSPECT?

1. Click on the "BOOK AN INSPECTION/ REQUEST AN INSPECTION" button
2. Register to join an existing inspection
3. If no time offered, please register so we can contact you once time is arranged
4. If you do not register, we cannot notify you of any time changes, cancellations or further inspection times

Rent - \$375

**PRICE:**  
**\$375**

**OPEN FOR INSPECTION:**  
**N/A**

# Sandra Liebenberg // 0437081639

sandra@slpropertiesgc.com.au // [www.slpropertiesgc.com.au](http://www.slpropertiesgc.com.au)

