

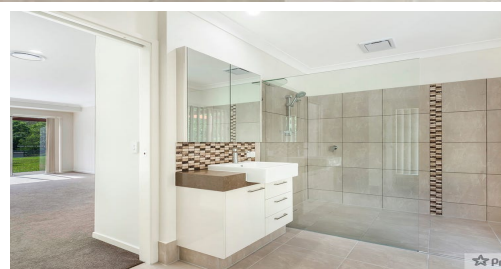
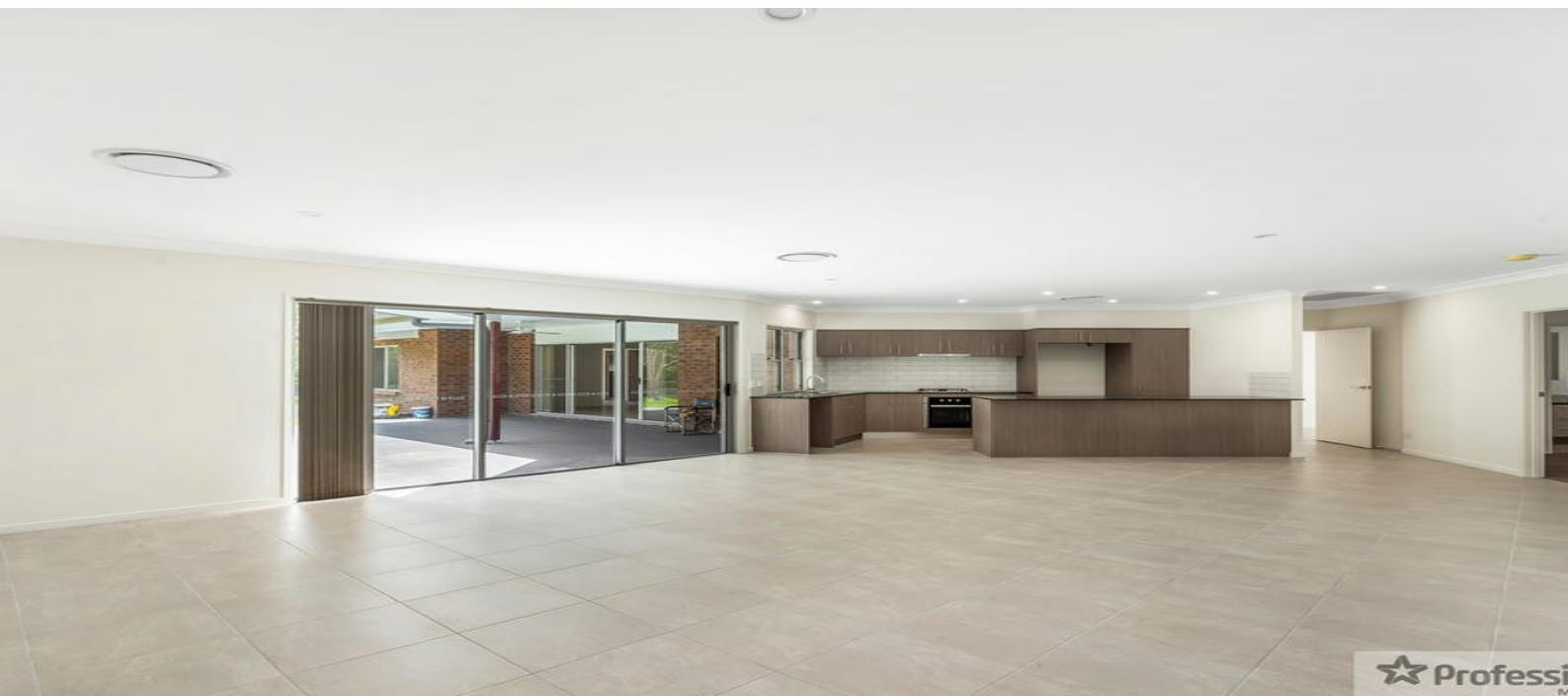
FOR LEASE

6  | 5  | 2 

6A MEWSDALE ROW, TALLAI, QLD, 4213



SANDRA LIEBENBERG
PROPERTIES GOLD COAST



APPLICATIONS PENDING

Brand New this property that will open the door to a whole new way of living with potentially 3 homes in one with a central entrance hall dividing the two dwellings and the left side also featuring its own Studio apartment. Dual living & large families need to inspect this property!

Right Dwelling:

- . 3 generous bedrooms all with built in robes and ducted airconditioning;
- . Master bedroom with ensuite and walk in robe;
- . Chef kitchen with Gas cooktop, stainless steel appliances and plumbing for fridge
- . Main bathroom with separate toilet and laundry;
- . Open plan lounge, dining overlooking outside area;
- . Separate room which can be used as a rumpus/4th bedroom (has a small cupboard)

Left Dwelling:

- . 2 generous bedrooms all with built in robes, ducted air-conditioning;
- . 1 Bedroom with ensuite and other with 2 way bathroom access;
- . Chef kitchen with Gas cooktop, stainless steel appliances and plumbing for fridge
- . Open plan lounge, dining overlooking outside area;

Studio Flat to Left dwelling;

PRICE:
\$900 per week

OPEN FOR INSPECTION:
N/A

Sandra Liebenberg // 0437081639

sandra@slpropertiesgc.com.au // www.slpropertiesgc.com.au

