

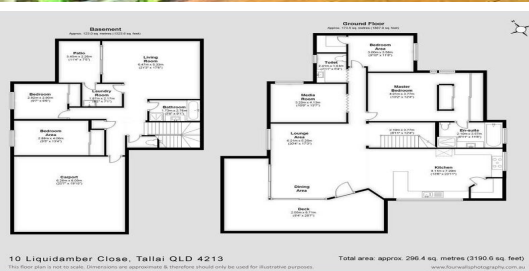
FOR LEASE

4  | 2  | 2 

10A LIQUIDAMBER CLOSE, TALLAI, QLD, 4213



SANDRA LIEBENBERG
PROPERTIES GOLD COAST



A SUPERB PROPERTY IN PICTURESQUE SETTING

Simply stunning in everyway this as new 4 bedroom family home nestled into a 2800m2 acreage block has plenty of space for everyone to relax and enjoy.

Featuring

- 4 Spacious bedrooms all with Built ins;
- King Size Master bedroom with spacious en-suite with spa and walk through robe;
- Open Plan Kitchen with walk in pantry, gas cooktop, stainless steel appliances, dishwasher and stunning views;
- Open plan living and meals area with separate media room on lower level;
- Spacious Family Bathroom and separate laundry;
- Equipped with ducted air conditioning & ceiling fans throughout;
- Large elevated verandah opening off lounge leading overlooking the hinterland views;
- 8 panels solar power and Gas Hot Water;
- 5,000 litres of water for use in toilets, laundry and garden;
- Fenced section of land perfect for children and animals;
- Abundant fruit trees, landscaped gardens and freshwater spring watering hole;
- Gated entrance with double carport under home.

Situated just a short drive to all the local schools, major shops, sporting fields, parklands, playgrounds as well as easy access to the M1 this property has something to suit everybody!

Call to inspect today as this property won't last long! 0755305255

Sandra Liebenberg // 0437081639

sandra@slpropertiesgc.com.au // www.slpropertiesgc.com.au

PRICE:
\$670

OPEN FOR INSPECTION:
N/A

