




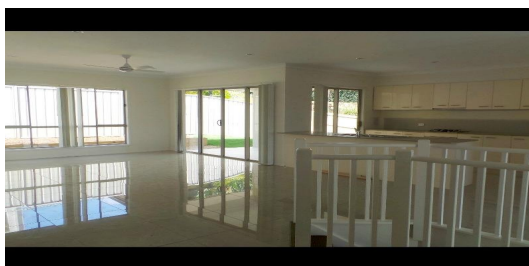
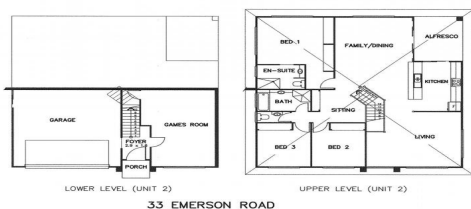
FOR LEASE

3  | 2  | 2 

33 EMERSON DRIVE, BONOGIN, QLD, 4213



SANDRA LIEBENBERG
PROPERTIES GOLD COAST



APPLICATIONS PENDING

Located in the highly sought after "The Aspect" is this two story 3 bedroom house perfect for everyone!

Featuring

- 3 Spacious bedrooms all with Built ins
- Master bedroom with ensuite, Built ins and Air-conditioning
- Open Plan Kitchen/Family room with air-conditioning leading onto the undercover Alfresco area
- Stainless steel appliances and dishwasher to Kitchen
- Separate Lounge overlooking the Bonogin Hills
- Huge downstairs rumpus/media/games room.
- Spacious Family Bathroom
- Double lock up garage
- Equipped with ceiling fans, high speed cable internet and no expense spared to fixtures and fittings throughout.

Situated towards the end of a quiet street just a short drive to all the local schools including Somerset, Kings & Clover Hill, all the major shops, sporting fields, parklands, playgrounds as well as easy access to the M1 this property has something to suit everybody!

Call to inspect today as this property wont last long! 0755305255

PRICE:
\$550

OPEN FOR INSPECTION:
N/A

Sandra Liebenberg // 0437081639

sandra@slpropertiesgc.com.au // www.slpropertiesgc.com.au

