

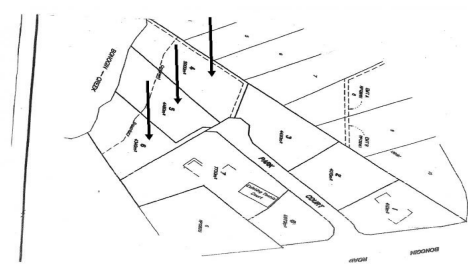
FOR SALE

0  | 0  | 0 

LOT 6 PARK COURT, MUDGEERABA, QLD, 4213



SANDRA LIEBENBERG
PROPERTIES GOLD COAST



COLLAPSED CONTRACT - MUST SELL NOW - THE BEST VACANT LAND IN TOWN

USABLE ACREAGE - BEAUTIFULLY MANICURED - READY TO BUILD
LOTS 4 & 5 SOLD LOT 6 STILL AVAILABLE

Set on the EXCLUSIVE 'Park Court' these magnificent acreage blocks are located at the end of what is arguably one of the best boutique streets in Mudgeeraba and are perfectly presented to let your dreams be your reality.

These rare AND USABLE acreage allotments are priced right and ready for you to build your dream home to enjoy a new relaxed lifestyle.

With the perfectly manicured grounds that flow to the picturesque Bonogin creek and the established advanced trees giving an instant landscape will add to the excitement and enhance what ever property design you choose.

The ideal location is just a short distance to a variety of the best facilities including the Robina Shopping Center, Mudgeeraba Town Center, M1 as well as a minute or two drive to Somerset College.

THE NEW AND LAST RELEASE AVAILABLE:

. Lot 4 (SOLD)

Sandra Liebenberg // 0437081639

sandra@slpropertiesgc.com.au // www.slpropertiesgc.com.au

PRICE:
\$400,000

OPEN FOR INSPECTION:
N/A

