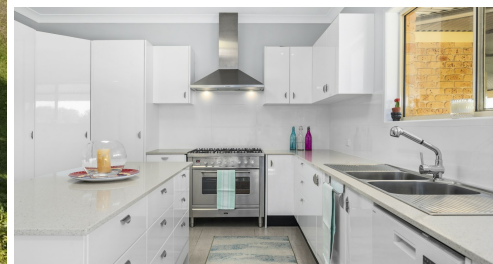
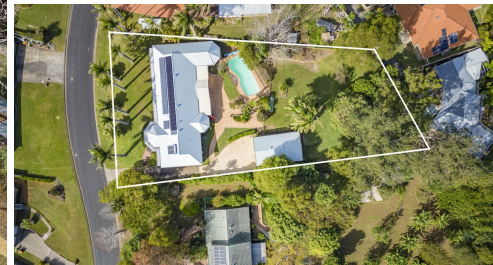


4 SEA BREEZE PLACE, BOAMBEE EAST, NSW, 2452



SOLD

**6 BEDROOM HOME, 380 M² OF LIVING - SPACE
SET IN A TROPICAL PARADISE. LAND SIZE 2,496
M²**

A grand statement of style and sophistication, this single level home will provide an impressive family lifestyle with a sense of freedom and space for the largest of families. Relax and have your morning tea out on the wide veranda that graces the front of the home, take in the mountain views and capture those summer breezes. This gorgeous home features extra high ceilings, beautiful bay windows, wide hallways and 6 queen size bedrooms. The main bedroom is situated privately at one end of the home featuring a large walk in wardrobe and ensuite. The gourmet kitchen is the central hub of the home featuring quality appliances. Entertaining is made easy with multiple dining zones and areas to entertain guests and family. The formal lounge features a large bay window that looks out to the gorgeous views of the hinterland. Relax in the undercover alfresco and BBQ area that overlooks the oversized 10m pool that's very private - the backyard is level with lots of fruit trees.

There is a 4 car remote garage that can easily accommodate 4WD cars with height access for a caravan. For the handyman there is a large 8.3 x 3.2 workshop area - Plenty of room to tinker and pursue your hobbies.

Looking after the rising electricity costs there is a large solar system in place as well as solar hot water. Other features include ducted air conditioning, ceiling fans and Crimsafe screens. Truly this home has everything even a gym that faces the undercover alfresco area overlooking the pool.

This luxurious coastal home is ready for you to move in and enjoy the coastal lifestyle let this one be your forever home.

Call Cheryl Donaldson today on 0466 037 468 for your private inspection.

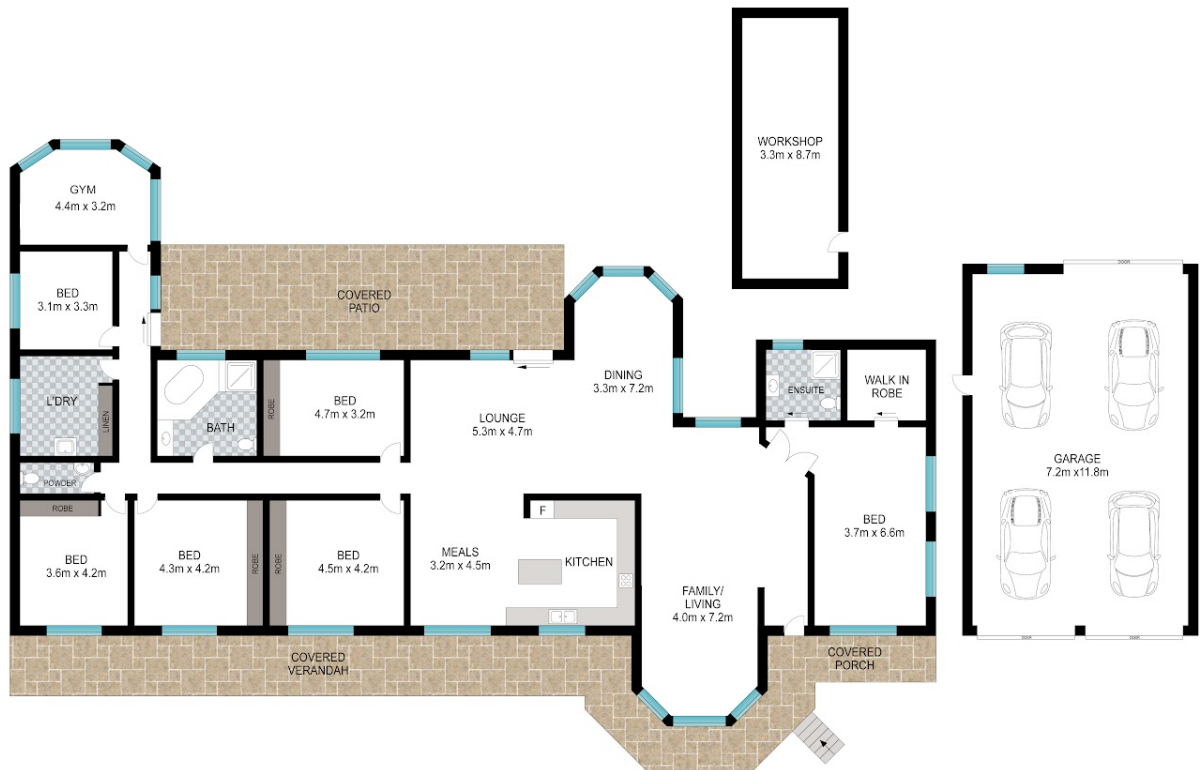
6 BED | 2 BATH | 6 CAR

PRICE:
\$1,305,000

OPEN FOR INSPECTION:
N/A



Cheryl Donaldson
0466037468
cheryl@atrealty.com.au
www.atrealty.com.au



Scale in metres. Indicative only. Dimensions are approximate. All information contained herein is gathered from sources we believe to be reliable. However, we cannot guarantee its accuracy and interested persons should rely on their own enquiries.

INT: 318 m²
EXT: 105 m²



4 Sea Breeze Place, Boambee East



Disclaimer: Please note this floor plan is for marketing purposes and is to be used as a guide only. All dimensions are estimates only and may not be exact measurements.

Cheryl Donaldson
0466037468
cheryl@atrealty.com.au
www.atrealty.com.au

