



SOLD

SPACIOUS LIGHT FILLED GROUND FLOOR APARTMENT WITH BROADWATER VIEWS - VACANT POSSESSION AVAILABLE

If you are looking for space, then this extra large 171m2 apartment is for you. Light filled and spacious, the large open plan living, dining and kitchen all flow out through floor-to-ceiling stacking doors onto the generous and private terrace. Entertaining is easy in the fully-equipped kitchen with quality European appliances. The generous Master bedroom suite with large en-suite, also has sliding doors to the wrap-around terrace and is tucked away at the rear of the apartment offering quiet and privacy. This apartment is designed for modern living.

A sun filled, landscaped terrace surrounds this ground floor apartment and offers year round entertaining, that's elevated to afford both privacy from the street and commanding views of The Broadwater and Wave Break Island. This terrace apartment offers a lock-up-and-go lifestyle and features lockable louvre shutters, offering residents both privacy and security. If you are downsizing then this apartment has all the space you could want both inside and outside.

'Waters Edge' is perfectly positioned on the Broadwater in Biggera Waters and is only metres to the sparkling Broadwater. With resort style facilities including a lap pool, you can enjoy the benefits of low maintenance apartment living. Designed for casual, relaxed living, these apartments are aimed at the discerning owner-occupier or someone looking for a higher end rental property. Nothing compares with living on the waterfront. Waters Edge is a residential development that captures the very essence of that sought after lifestyle.

Waters Edge is a residential only building directly opposite the Broadwater.

Apartment features

- 96m2 internal plus 75m2 terrace - Total 171m2 living space.
- Fully equipped kitchen with granite bench tops and quality European appliances
- Separate study/dining area
- Master bedroom - walk in robe, generous en-suite
- Large second bedroom - mirrored robes.
- Separate 'European' laundry
- Ducted personal control air-conditioning
- Crim-Safe security doors throughout
- Large terrace with plantation shutters and wide stacker doors.
- 2 side by side secure parking spaces

2 BED | 2 BATH | 2 CAR

PRICE:
\$875,000

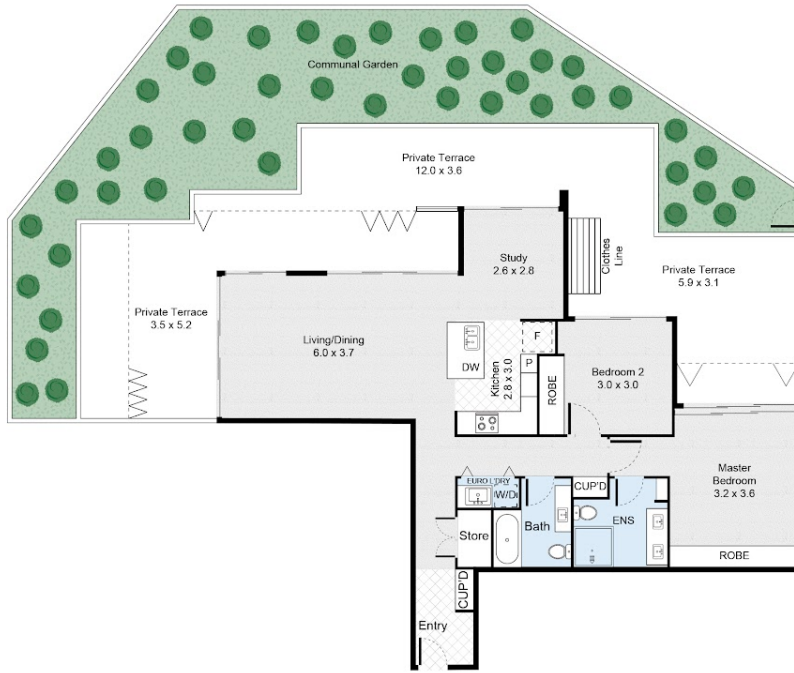
OPEN FOR INSPECTION:
N/A



Francine Setchell
0408143464
francine@atrealty.com.au
www.atrealty.com.au

Unit 1006, 438 Marine Parade, Biggera Waters

2 Bed 2 Bath



Interior : 96m²
Exterior : 75m²
Total Area : 171m²



FLOOR PLAN

All information contained herein is gathered from our 3D scanned tours via Matterport. Whilst the 3D scanning technology is very accurate we cannot guarantee its accuracy and interested parties should rely on their own enquiries.

Disclaimer: Please note this floor plan is for marketing purposes and is to be used as a guide only. All dimensions are estimates only and may not be exact measurements.

Francine Setchell
0408143464
francine@atrealty.com.au
www.atrealty.com.au

