

2/29 KINGSCLARE STREET LEUMEAH



FOR SALE

A CONVENIENT START

Look forward to having all of your modern comforts conveniently located at your fingertips. Whether you're a first home buyer or growing your investment portfolio, you will be impressed with what this immaculate townhouse has to offer. Treated to a recent cosmetic facelift, its fresh & vibrant interiors can be adorned from entry to exit. Located in a quiet complex of 5, it offers those who lead a busy schedule, a low maintenance lifestyle while encompassing comfort with practicality spread over an impressive two story floor plan.

Features Include:

- Two well proportioned bedrooms with built in robes
- Master suite is generously bigger & equipped with a wall length mirrored built in robe & ceiling fan
- Newly installed air conditioning units to both bedrooms
- Expansive living room equipped with a split system air conditioning unit
- Sunken dining room & kitchen
- Well appointed galley style kitchen with ample cupboard & bench space
- Stainless steel appliances including a dishwasher
- Bright & airy bathroom equipped with a bathtub & double length shower
- Separate toilet
- New flooring
- Fresh coat of paint throughout
- New doors installed throughout
- Linen closet
- Spacious laundry equipped with a second toilet & backyard access
- Under stairs storage
- Back courtyard includes recent updates catering to those seeking a low maintenance yard & include fully concreted the courtyard & installation of the undercover entertaining area
- Garden shed
- Fold down clothesline allows for extra space
- Side access to courtyard
- Recent landscaping to front garden
- Recently installed timber decking to front porch
- Single garage with internal access
- The body corporate appointed to manage this complex takes care of the front lawn

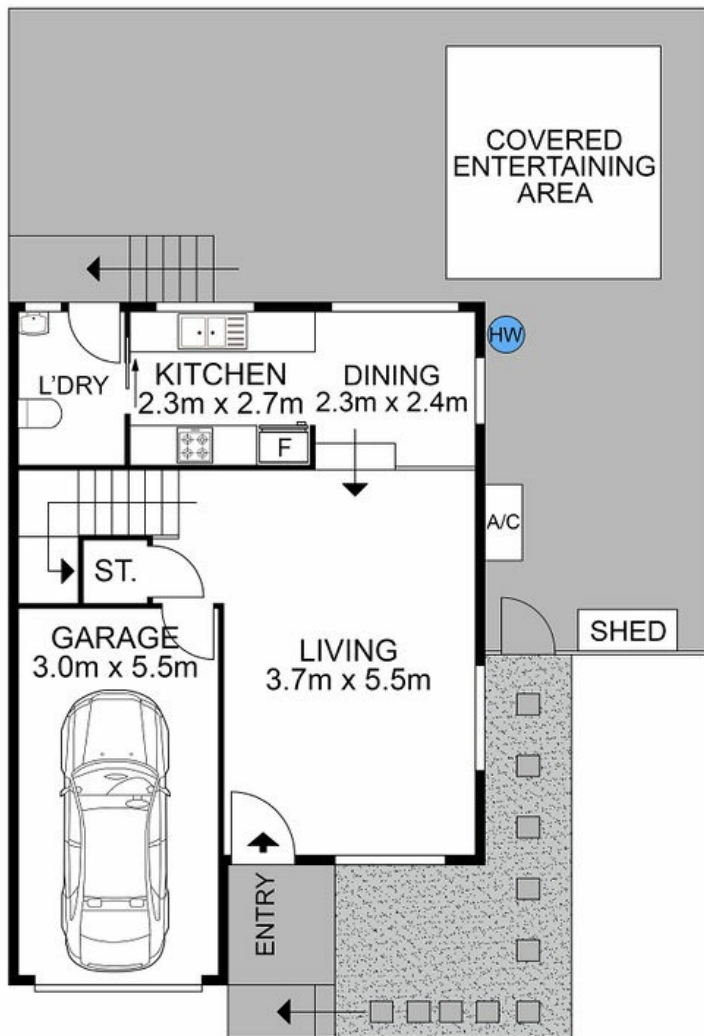
2 BED | 1 BATH | 1 CAR

PRICE:
Just Listed

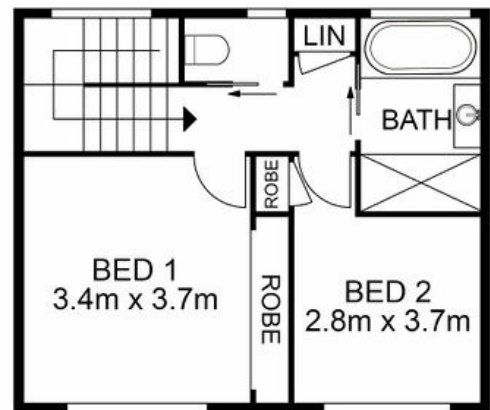
OPEN FOR INSPECTION:
N/A



Huss Al Salemi
0411699419
huss@atrealty.com.au
www.agencycentral.com.au



ENTRY LEVEL



UPPER LEVEL



Disclaimer: Please note this floor plan is for marketing purposes and is to be used as a guide only. All dimensions are estimates only and may not be exact measurements.

29 Kingsclare Street, Leumeah

Huss Al Salemi • All measurements are approximate • Drawn for marketing purposes only

0411699419

huss@atrealty.com.au

www.agencycentral.com.au

