



SOLD

PRIVATE & CONVENIENCE WITH LARGE DOUBLE GARAGE + WORKSHOP/STOREROOM

Peacefully nestled at the end of an idyllic tree-lined complex is an awe-inspiring three bedroom duplex style townhouse that will make you smile. This generous home is all about offering amazing space and comfort in a convenient location.. It's the ideal choice for first homebuyers and downsizers, offering supreme convenience.

This residence offers an open-plan space dedicated to the formal lounge and dining room, creating an inviting space to entertain family and friends. This has direct access to the private east facing courtyard where you can relax and entertain in the open air. All of this is located in close proximity to public transport, schools, an array of local amenities.

- Generous separate lounge and dining areas with solid timber floors.
- The flowing floorplan opens to the East facing alfresco entertaining area.
- Gas cooking kitchen with granite benchtops kitchen with dishwasher and pantry.
- Bright and airy bedrooms with built-ins.
- Master bedroom suite & 2nd bedroom both offer Ensuites.
- Stylishly appointed bathrooms with floor to ceiling tiles.
- Internal laundry 4th toilet.
- Secure double lock up garage with auto door + storeroom.
- Basement carpark provides ample visitor parking.
- Stroll to buses and local shops.
- Beautifully presented, ready to move straight in and enjoy.

Construction Date: 2007

Approximate Outgoing :

- Council : \$293 per quarter
- Water: \$150 per quarter
- Strata: \$1,105 per quarter

Approximate area:

- Total allotment: 250sqm
- Ground floor incl courtyard: 128sqm
- First floor: 48sqm

3 BED | 3 BATH | 2 CAR

PRICE:
\$990,000

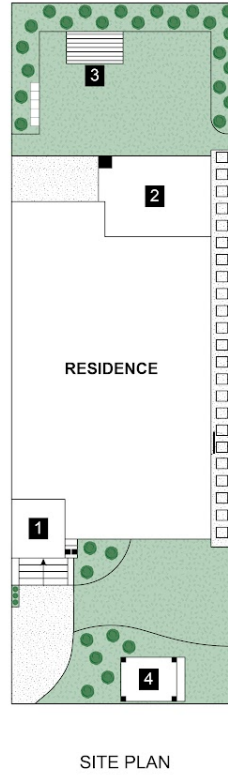
OPEN FOR INSPECTION:
N/A



Gavin McCutcheon
0413686969
gavin@atrealty.com.au
buyingsellingrenting.com.au

Unit 18, 1 Checkley Court, Ermington

3 Bed 3 Bath 2 Car



LEGEND

1. Porch
2. Alfresco
3. Clothes Line
4. Pergola

Internal : 132m²
External: 52m²



All information contained herein is gathered from our 3D scanned tours via Matterport. Whilst the 3D scanning technology is very accurate we cannot guarantee its accuracy and interested parties should rely on their own enquiries.

Disclaimer: Please note this floor plan is for marketing purposes and is to be used as a guide only. All dimensions are estimates only and may not be exact measurements.

Gavin McCutcheon
0413686969
gavin@atrealty.com.au
buyingsellingrenting.com.au

