



FOR SALE

GREAT CENTRAL LOCATION

Broadbeach On The Park is in the centre of Broadbeach. Within a five minute walk is the shops, supermarket, restaurants, and cafes and the beach. Within a 10 minute walk is the Casino and Pacific Fair Shopping Centre. The apartment comes with two bedrooms the main having an ensuite and a second bathroom with spa bath. The main bedroom has a walk in wardrobe and the second bedroom spacious built in robes. There are views to the South East to Coolangatta and to the mountain ranges to the West. On site facilities include heated pool with lap lane, spa, sauna, steam room, and gym.

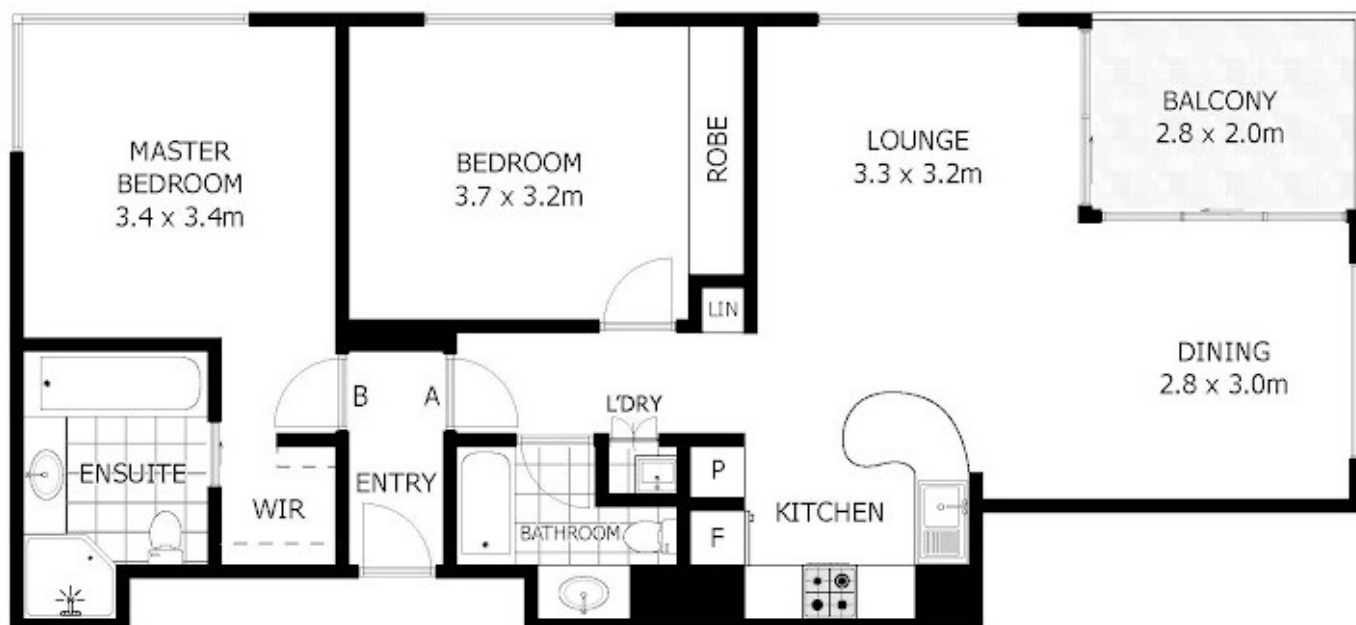
2 BED | 2 BATH | 1 CAR

PRICE:
\$735,000

OPEN FOR INSPECTION:
N/A



Graham Baker
0411209497
grahambaker@atrealty.com.au
www.atrealty.com.au



Disclaimer: Please note this floor plan is for marketing purposes and is to be used as a guide only. All dimensions are estimates only and may not be exact measurements.