



**SOLD**

## BIG, BOLD AND BEAUTIFUL!

If you are looking for size this apartment is a must see. Located on the first floor at the rear of the complex this quiet apartment is all about location. Within walking distance to the Parap Markets, close to shops and bus stops.

Features include:

- \* Secure Complex
- \* A lift for easy and convenience
- \* Huge living area
- \* Modern complex
- \* 2 Bed, 2 bath and 2 carport
- \* Large bedrooms with built in robes
- \* Modern Kitchen with lots of storage and bench space
- \* Tidy and well maintained complex
- \* Separate Laundry and storeroom near entry
- \* Huge size balcony with ceiling fan and external power points
- \* Private outlook

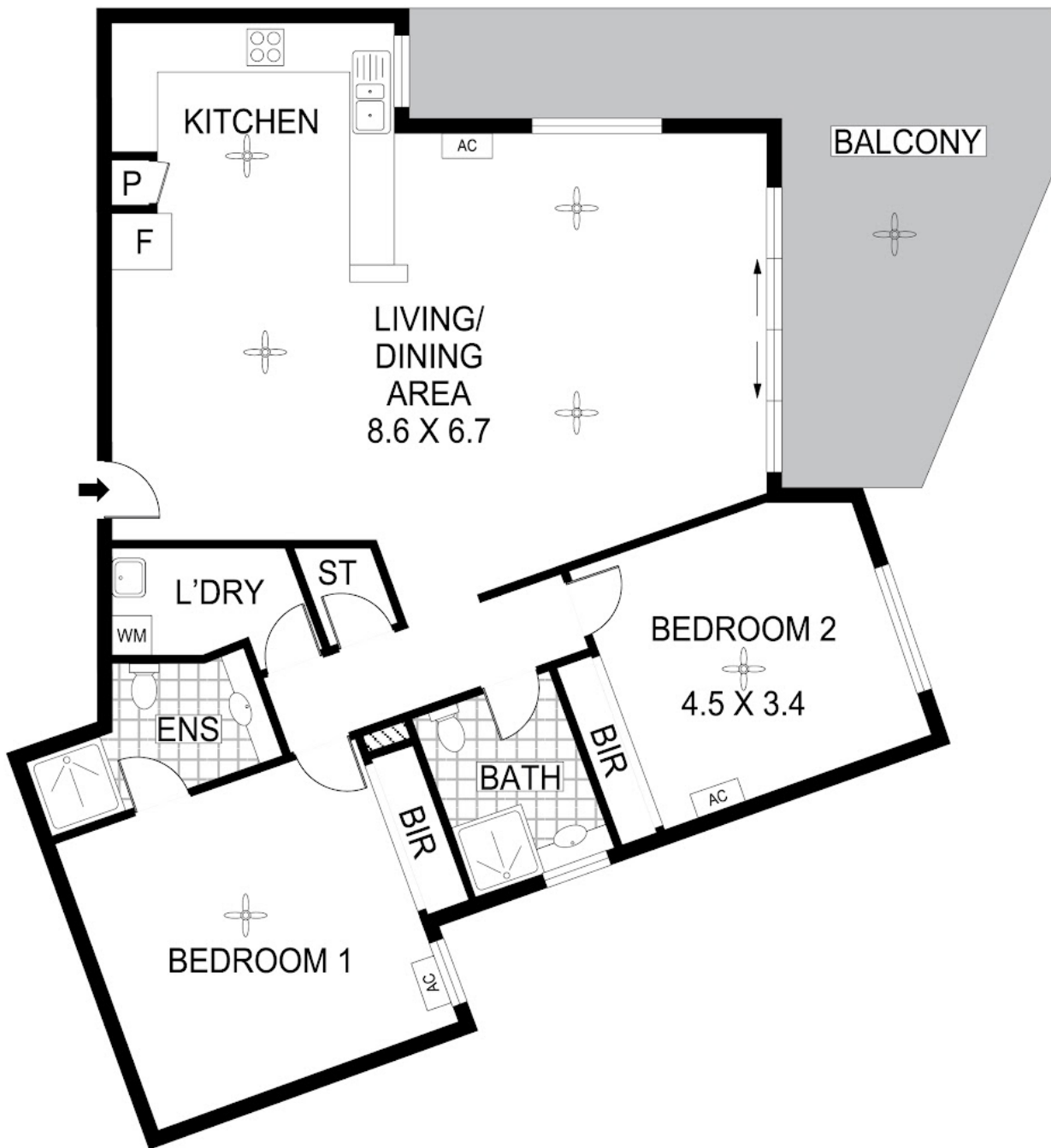
2 BED | 2 BATH | 2 CAR

PRICE:  
\$450,000

OPEN FOR INSPECTION:  
N/A



**Nicole Wheeler**  
**0417508800**  
nicolewheeler@atrealty.com.au  
[www.atrealty.com.au](http://www.atrealty.com.au)



Disclaimer: Please note this floor plan is for marketing purposes and is to be used as a guide only. All dimensions are estimates only and may not be exact measurements.

Scale in metres. Indicative only. Dimensions are approximate. All information contained herein is gathered from sources we believe to be reliable. However we cannot guarantee its accuracy and interested persons should rely on their own enquiries

6/13/6 Somerville Gardens, Parap NT

Nicole Wheeler

0417508800  
nicolewheeler@atrealty.com.au

[www.atrealty.com.au](http://www.atrealty.com.au)

