



FOR SALE

OFFER OVER \$700,000:: MOVE IN TODAY TO THIS LARGE 4 BEDROOM PLUS STUDY TWO-STOREY HOME ON A LARGE 608 SQ BLOCK.

LAST CHANCE: OFFERS CLOSING ON 11th DEC TO OWN THIS AMAZING HOME OPPORTUNITY AT BELOW REPLACEMENT COST. CALL TODAY TO SUBMIT YOUR OFFER.

Open DAILY for private inspection please call for times.

Realestate.com.au's official comparable price ranges are between \$660,000 to \$800,000.

This home is on one of the largest blocks in the area, having the additional opportunity to create extra income with room for a self Contained "Granny Flat"

If you want room to move, with a real yard for the kids? Look no further, this is a stand-out opportunity! representing irreplaceable value for a large family home with huge, yet private, front, back and side yards! it's rare to find a home on a block this size in this location.

All within walking distance to everything a family is looking for golf course, parks, schools, two shopping centres, bunnings, child care and transport.

Due to the current market conditions, we are accepting all offers over \$700,000.

Features of this home include:

- The most valuable asset in the suburbs LAND - LAND - LAND
- A large modern, 198 sq mtr home built in 2015
- A rare, two-storey, statement home positioned on the highest point in the street
- Room for a pool or to extend or build a granny flat.
- Great views and cool breezes flow throughout the home
- Covered entertaining area
- Modern kitchen
- Powder room downstairs
- A separate study
- Plenty of storage
- Extra secure space and access for cars, boats or caravan storage.

4 BED | 2 BATH | 2 CAR

PRICE:

OFFERS OVER \$700,000

OPEN FOR INSPECTION:

N/A

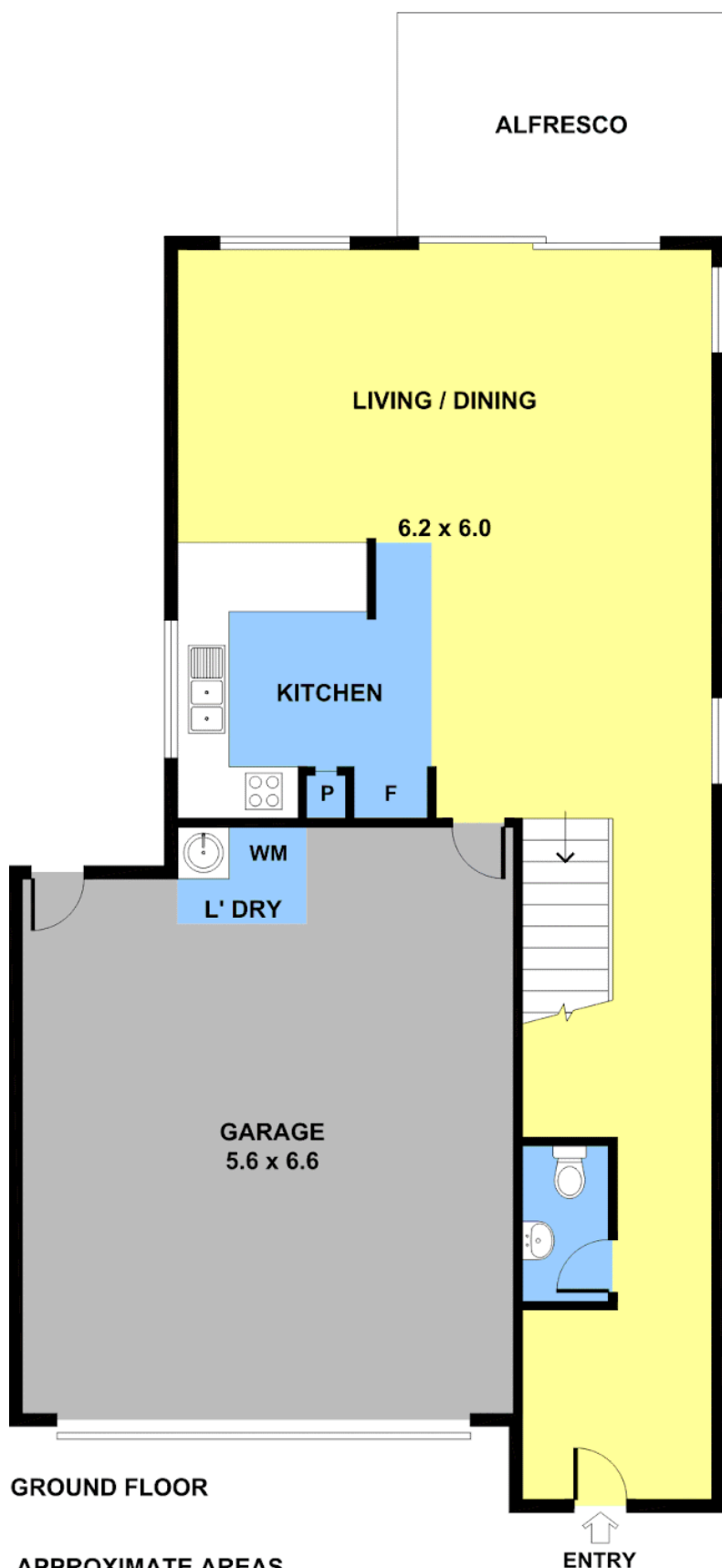


Gregg Hewitt

0413442229

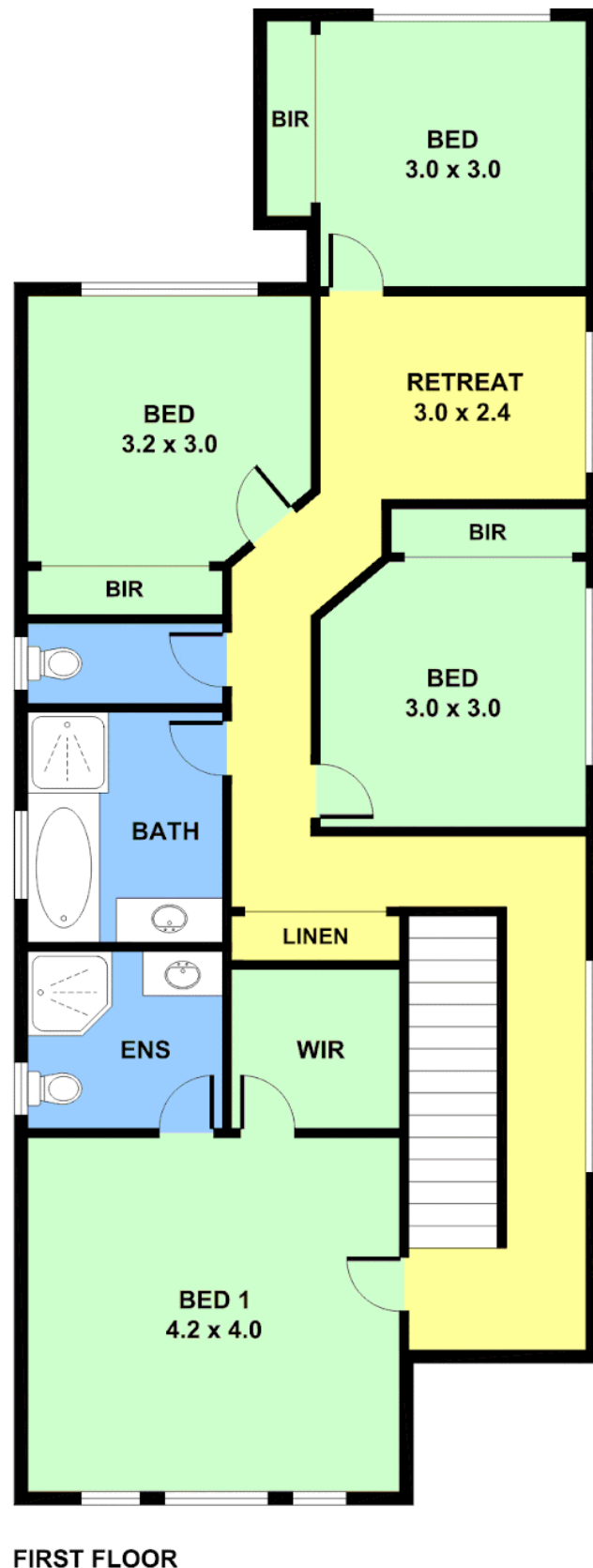
gregg@atrealty.com.au

[Gregg Hewitt](#)



APPROXIMATE AREAS

INTERNAL : 150 m²
GARAGE : 38 m²



Disclaimer: Please note this floor plan is for marketing purposes and is to be used as a guide only. All dimensions are estimates only and may not be exact measurements.