



## FOR LEASE

### IMMACULATE GROUND FLOOR CORPORATE OFFICE SUITE - ONLY SECONDS TO THE M1

Looking for a stunning fully furnished office centrally located between the Gold Coast and the Brisbane CBD? Look no further. This well appointed office space, in a highly sought after corporate complex, offers any professional business a ground floor office with the bells and whistles.

Features include:-

- \* 146 SQM of fully furnished high quality ground floor office space.
- \* Corporate Reception and Foyer area.
- \* Large executive boardroom - with projection set up.
- \* 4 - 5 fully furnished separate offices.
- \* Split Air - conditioning through-out.
- \* Separate Kitchen.
- \* Server/Printer Room with NBN connection.
- \* Store-room/Fifth office with roller door access.
- \* New fully refurbished through out, with new carpet tiles and fresh paint throughout the office.
- \* Two exclusive use basement car spaces.
- \* Ample visitor parking and additional unallocated staff parking.
- \* Onsite Cafe.
- \* Excellent access to major arterials including the M1 and Logan Road.
- \* Close proximity to shopping precinct, restaurants and cafes.
- \* Outgoings included in rental price.
- \* Sure be impressed.
- \*\* Available September 2022
- \*\* Incentives offered by Landlord - enquiry now

Simply bring your IT equipment, staff & stationary and move it.  
Contact exclusive Agent Sandra Carder on 0418 2222 57 to arrange an inspection.

0 BED | 0 BATH | 0 CAR

PRICE:

Contact Exclusive Agent

OPEN FOR INSPECTION:

N/A



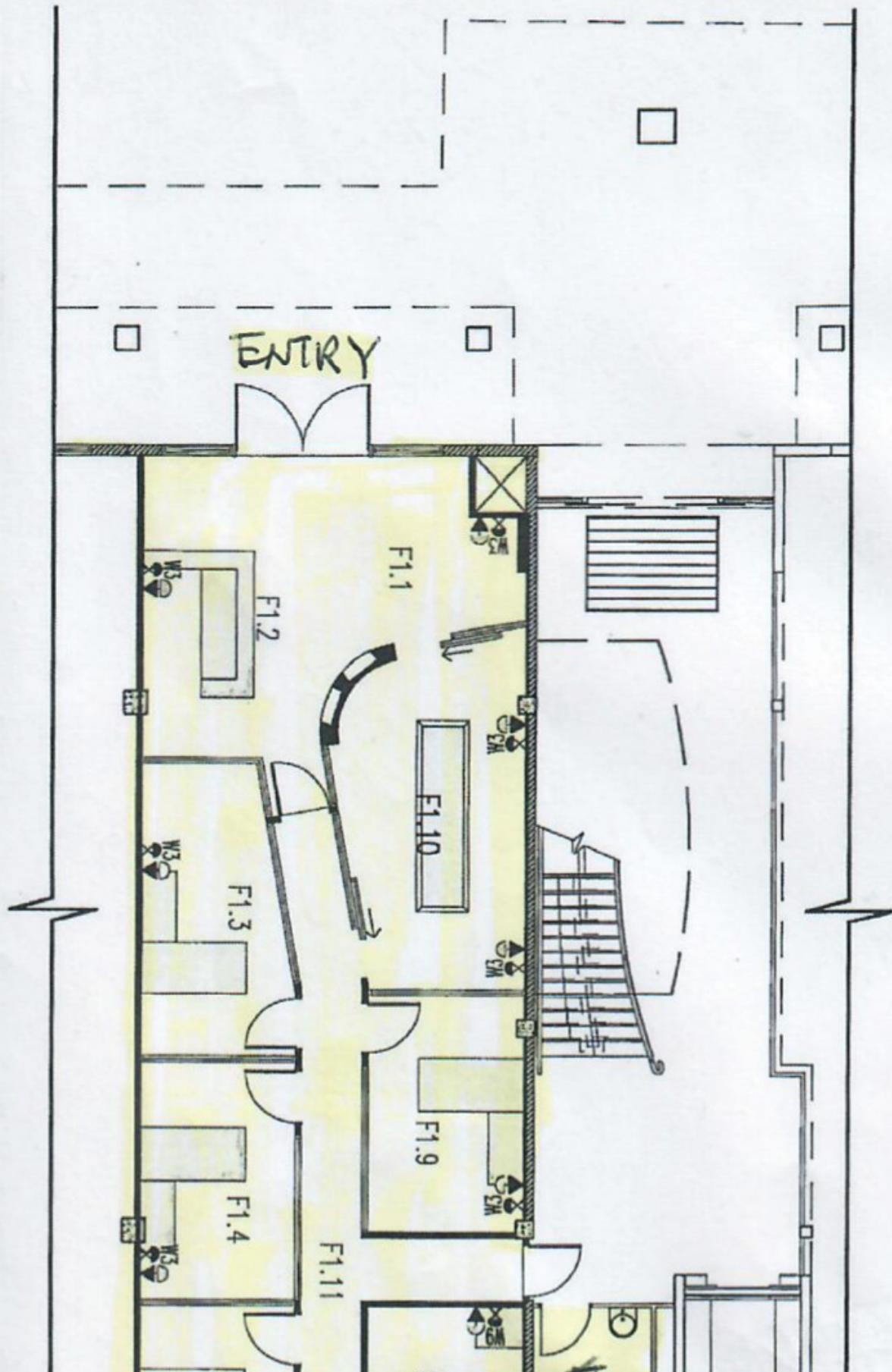
**Shaun Robinson**

**0403416419**

shaun@atrealty.com.au

[www.atrealty.com.au](http://www.atrealty.com.au)

# GROUND FLOOR POWER & DATA 1:100



Disclaimer: Please note this floor plan is for marketing purposes and is to be used as a guide only. All dimensions are estimates only and may not be exact measurements.

Shaun Robinson  
0403416419  
shaun@atrealty.com.au  
www.atrealty.com.au

