



FOR LEASE

PRIME LOCATION AT EXCELLENT VALUE

This stunning and high end quality finish family home is waiting for a new family to enjoy.

Spacious and open plan take advantage of the large and light living and dining area of the chef's style kitchen with butlers pantry and stainless steel appliances to make entertaining fun and functional.

Private and secure internal courtyard the perfect place to host family and friends.

Superior design with forward planning and future demographics in mind with a bedroom located downstairs for guests or in-laws/teenagers wanting their own area.

Upstairs features 3 generous bedrooms with full fit out for comfort and convenience. There is a second living area/retreat upstairs in addition to the master suite with large balcony, city views and two hotel look and feel gorgeous bathrooms to indulge in.

Prime location near excellent schools such as St Hilda's and TSS. This low maintenance home is ideal for those who are time poor but not willing to compromise on style or quality.

Near new homes don't last long so be quick.

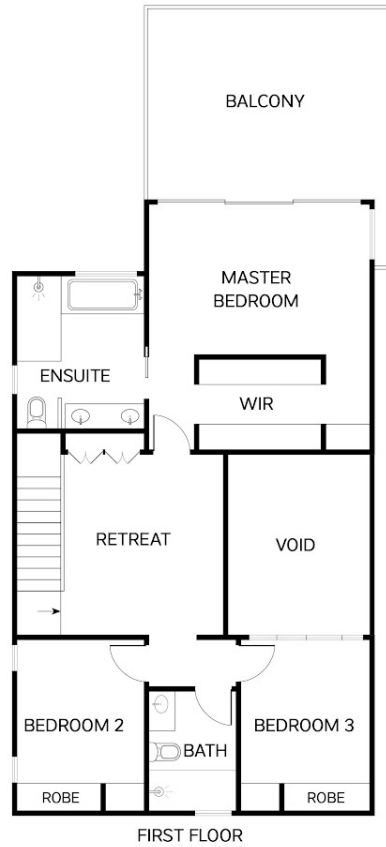
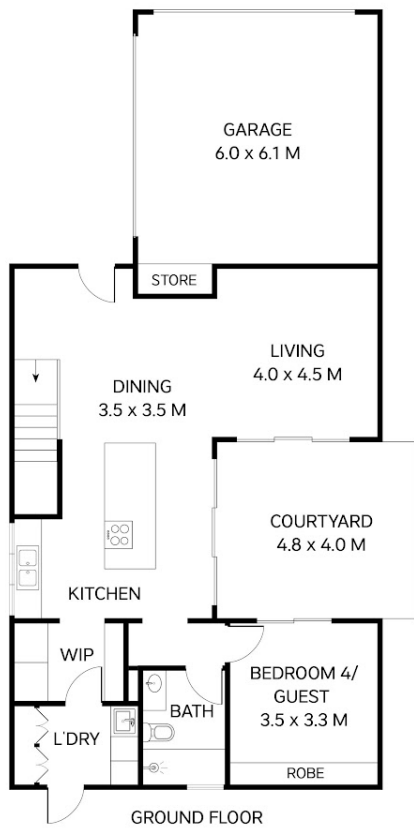
4 BED | 3 BATH | 3 CAR

PRICE:
\$1,050 per week

OPEN FOR INSPECTION:
N/A



Sandra Sherratt
0411298493
sandrasherratt@atrealty.com.au
www.atrealty.com.au



TOTAL: 236 m²

Disclaimer: Please note this floor plan is for marketing purposes and is to be used as a guide only. All dimensions are estimates only and may not be exact measurements.