



**SOLD**

**ELEVATED AND SITTING PRETTY ON 808M2 -  
READY FOR YOUR MOVE NOW!**

Teresa Cawte, your @realty agent, welcomes to the market 6 Gilmore Street for the very first time. Nurtured and well cared for, this home is ready for you to walk in and unpack.

Features:

- \* 3 bedrooms - Master with walk in robe and ensuite
- \* 2 bathrooms
- \* 2.6m ceilings
- \* Double Lock up Garage - internal access to the living room
- \* New Large Split air conditioner for the kitchen and dining
- \* New internal paint throughout
- \* New Flooring
- \* New lights and switches
- \* New Roller Door Motors
- \* Tiles Patios to comfortably entertain on
- \* Vehicle side access
- \* Large Garden Shed

St Therese's Private Primary School is within walking distance to Gilmore Street and there are many options for daycare facilities throughout Bentley Park.

Relax on either patio, gaze at the mountains and enjoy the peace and silence of living at the end of a close. Many of the neighbours are long term residents which adds to your comfort of settling in with ease.

With the superb presentation, the quiet position and the affordable price of this property, you will be excited to call this your home.

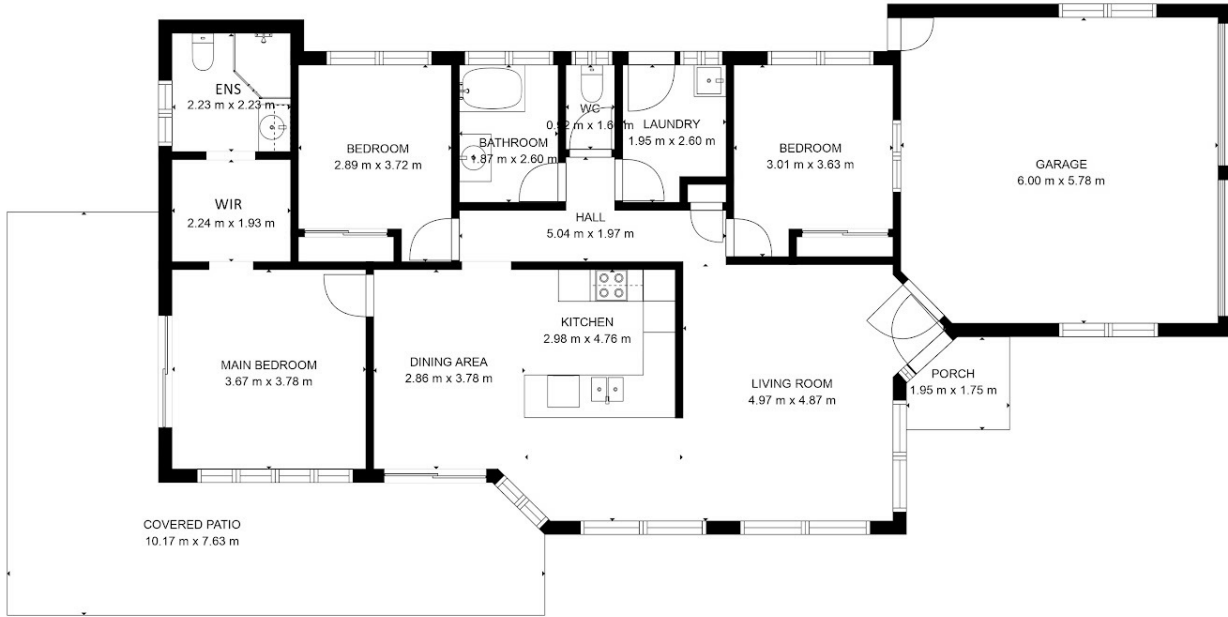
**3 BED | 2 BATH | 2 CAR**

**PRICE:**  
**\$440,000**

**OPEN FOR INSPECTION:**  
**N/A**



**Teresa Cawte**  
**0413209810**  
teresacawte@atrealty.com.au  
[www.atrealty.com.au](http://www.atrealty.com.au)



## FLOORPLAN

Plan is not to scale and is indicative of layout. It is for illustrative purposes only. All room sizes and dimensions shown on this plan, including, but not limited to, doors, windows, cabinets are approximate. Property Shots Australia gives no guarantee to the accuracy of the document.

# 6 Gilmore Street, Bentley Park

Disclaimer: Please note this floor plan is for marketing purposes and is to be used as a guide only. All dimensions are estimates only and may not be exact measurements.