



SOLD

IN TOWN LOCATION WITH GENEROUS PROPORTIONS WITH A STUNNING RURAL OUTLOOK AT REAR!

This elevated home is full of character with impressive abundance of space and a family friendly floorplan. Perfect for families with three large bedrooms plus a study and a large deck at the rear with mesmerizing views of the rural landscape. The convenience of living within 800 metres to Kempsey town centre make this lifestyle truly appealing.

- Polished timber floors, high ceilings and bright LED lighting complement a refreshed backdrop of bright interiors, creating a warm and welcoming ambiance.
- The living room caters comfortably for the busy household with a beautiful open fire place with ornamental mantle, convenient access to front porch via double doors and natural light pours in through the sash windows on the northern side.
- The dining room provides space for even the largest of dinner parties and seamlessly opens to a sunroom and an undercover deck with beautiful rural views, providing utmost privacy with only paddocks as your backdrop.
- All three bedrooms are located off a wide hallway and are generously proportioned with gorgeous period details of decorative cornices and the master with built in robes.
- Additional room off the sunroom perfect to be used as a study, craft room, storage space or office, complete with a laundry shoot.
- More than highly functional, the spacious kitchen is a cook's delight with 900mm Gas cooktop and electric oven, dishwasher, double sink with veg wash tap, decorative tile splashbacks & built in plate stand, generous preparation and storage space.
- The bathroom has been updated with gorgeous selection of tiles, spacious shower, bath tub, period pedestal sink and built in shaving cabinet.
- Bonus multi-purpose studio space off laundry downstairs with extra WC, perfect for a home office, gym, more storage or kids rumpus.
- A massive area under the house that could be converted into a second dwelling (stca) or excellent for workshop area
- A single garage with automatic door plus additional off-street parking.
- Fully fenced rear yard which is terraced into two levels, perfect for a fire pit, vegetable patch and pet and child friendly.
- Pest & Building reports available on request

3 BED | 1 BATH | 1 CAR

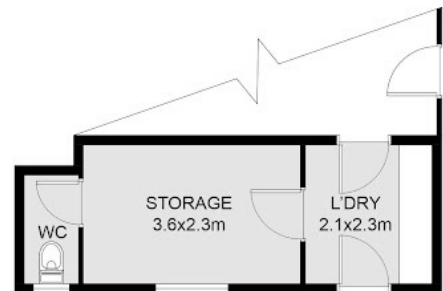
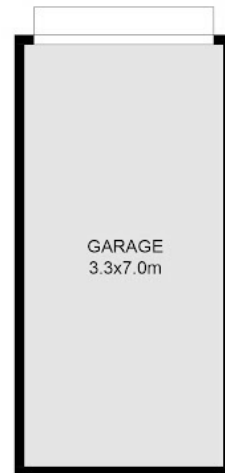
PRICE:
\$480,000

OPEN FOR INSPECTION:
N/A



Jenny - OLD Magill
0490403052

jennymagill@atrealty.com.au
jennymagill.com.au



FLOOR PLAN

Disclaimer: Please note this floor plan is for marketing purposes and is to be used as a guide only. All dimensions are estimates only and may not be exact measurements.

This floor plan including furniture, fixture measurements and dimensions are approximate and for illustrative purposes only. BoxBrownie.com gives no guarantee, warranty or representation as to the accuracy and layout. All enquiries must be directed to the agent, vendor or party representing this floor plan.

Jenny - OLD Magill
0490403052 Address: 45 Lord Street, East Kempsey
jennymagill@atrealty.com.au
jennymagill.com.au