
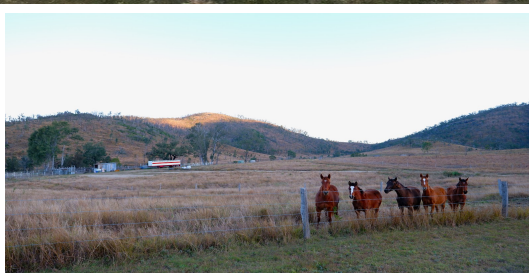


FOR SALE

2  | 1  | 8 



3759 GAYNDAH MOUNT PERRY ROAD, MOUNT PERRY, QLD, 4671



"YERILGA" 5770 ACRES OF PROVEN QUALITY BREEDING COUNTRY

Located in the North Burnett region of Mingo QLD, approximately 18ks from Mount Perry situated in the large catchment area of Paradise Dam, a quality parcel of 5770 acres predominately softwood scrub breeding enterprise "Yerilga" presents. With an long term annual rainfall of approximately 700mm (28 inches), this property has had extensive earthworks, structure & pasture improvements completed over the past few seasons to drought proof this quality property & comfortably carry 550 cows & calves.

All the hard work is complete with new dams constructed and majority of springs and original dams have all been cleaned out.

Property Features include -

- 2335 Hectares / 5769.91 Acres on 1 Freehold Title
- Comfortable Carry Capacity - 550 Cows & calves + 40 replacement heifers
- \$1120 Per Acre / \$12,000 per Breeder Country
- Fenced in to a total of 9 Paddocks
- Comfortable 2 bedroom Colourbond home with gas hot water and electric stove
- Large off grid 12KW solar system (3 years old) with a backup 25 KVA generator
- Recently refurbished large set of timber and steel cattle yards with a vet crush and steel loading ramp (400x head) with B/Double access
- Good quality 4 barb split post fencing with steel gates throughout
- Dams - 13 in total, of which 4 are springfed / 8 Permanent water holes
- Endless cullv's feed into clean dams and permanent sprinas

PRICE:
P.O.A

OPEN FOR INSPECTION:
N/A

Ty Dan // 0437226831

ty@widebayregionalestate.com.au // www.widebayregionalestate.com.au

