



FOR SALE

INVESTMENT OR YOUR NEW HOME?

Superbly located, this low-maintenance unit is within walking distance to the local Parks, Childcare Centre, Doctors clinics, transport and all of Warragul's facilities. The functional floorplan, bright spaces, quality window furnishings and little extras add to its appeal. The Open lounge, meals area and good-sized kitchen, with plenty of storage and appliances.

With 3 good sized bedrooms, 2 complete with built-in robes. The bathroom is centrally zoned for easy access and the laundry provides more room for storage space.

Outdoor, undercover alfresco with privacy blinds and views to the park. A perfect location to enjoy the warm summer days and to entertain family and friends.

Features:

- *No body corporate
 - *Ducted Gas heating
 - *Close to parkland and playgrounds
 - *Quiet location
 - *Ready to move in
- Call Mel to inspect...

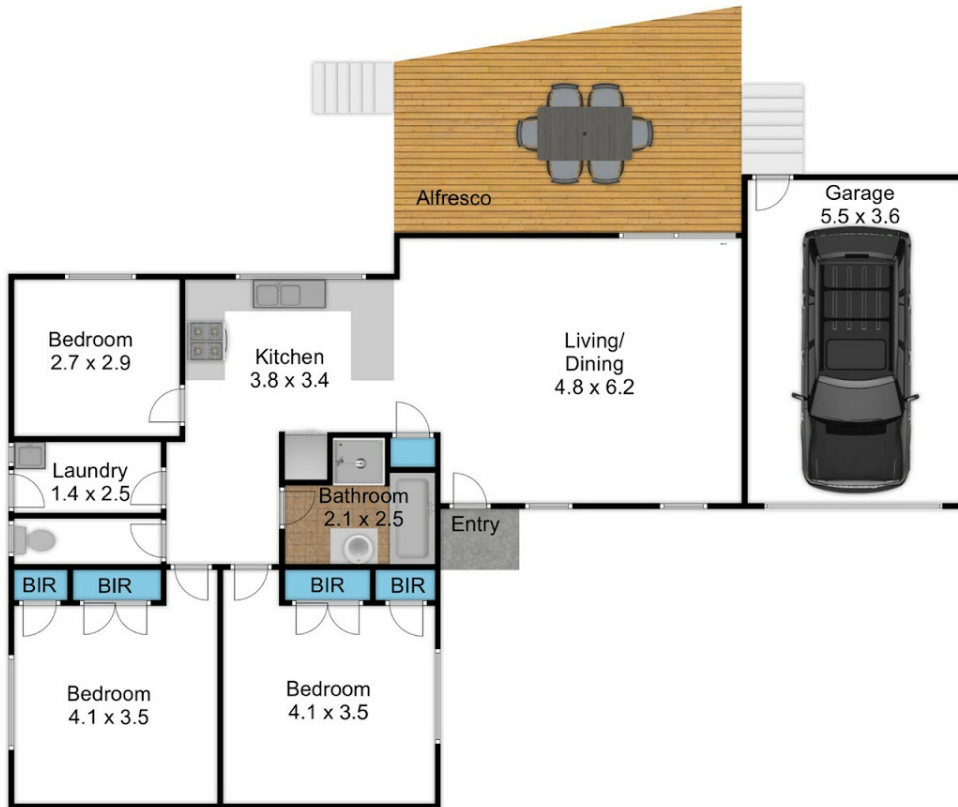
3 BED | 1 BATH | 1 CAR

PRICE:
\$385,000

OPEN FOR INSPECTION:
N/A



Melissa Ahearn
0409183763
mahearn@atrealty.com.au
atrealtypropertysalesgippsland.com.au



Disclaimer: Please note this floor plan is for marketing purposes and is to be used as a guide only. All dimensions are estimates only and may not be exact measurements.