

30 GLENDALE ROAD, SPRINGVALE, VIC, 3171



SOLD

SOLD OUT \$1,050,000 BY VIET HA 0406 246 384

Owner & Director of VIET HA Selling Expert Property Group - Viet Ha is proud to present this lovely house, which will appeal to both first-time buyers, investors or own business. This is your chance to own an impeccable, turn-key house in SPRINGVALE. Every imaginable inclusion has been considered to guarantee that this home gives an easy and comfortable lifestyle

THE GOOD BITS

A picture of pride in beautiful, manicured gardens, this light filled gorgeous home is placed on 710 sqm2 (approx.) of future opportunity. The home itself is superb! Prestigiously positioned in Springvale central and Meticulously upgraded for immediate enjoyment. It is in a premium position and you are bound to fall in love with it! It's the ideal time to pounce on this superb piece of land, and all the potential it holds to boost your property portfolio.

WHAT YOU'LL LOVE

Like a breath of fresh air, this renovated home has space, contemporary finishes and is large enough for the biggest of families, while having the flexibility for future development (STCA). Inside you have an open living with dining, renovated kitchen that flows to an undercover alfresco, five bedrooms inside, an updated bathroom, extra living room and theater room. There's also a plethora of car accommodation with the lock up garage. Set to impress your friends, the alfresco deck is ideal for entertaining with family and friends and overlooks a smartly landscaped backyard where children can play. This is a great unit that offers a huge amount of potential in a fast-growing suburb

Property features include:

- Modern double kitchens, s/steel 600mm ovens and gas stoves, range hoods, dishwasher, electric oven, gas cooktop, breakfast bar, pendant lighting
- Tiled/Timber flooring in open areas
- Ground floor 2.65m high ceiling
- Chic designer floor to ceiling tiled bathrooms
- Tow bathroom, 2 toilets, 1 living room, 3 Car
- Five spacious bedrooms with hard-timber and robes (walk-in to upper master)
- Tiling in all wet areas
- Low-maintenance yard, veggie patch, off-street parking

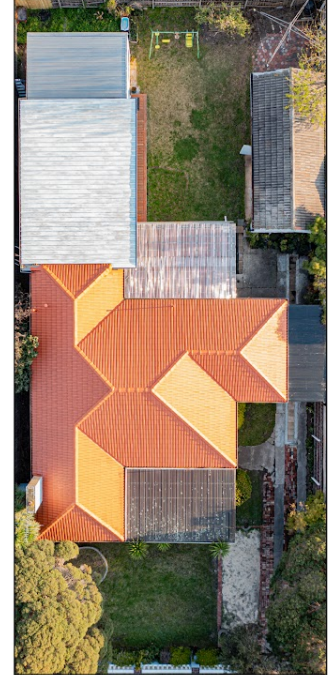
5 BED | 2 BATH | 2 CAR

PRICE:
\$1,050,000

OPEN FOR INSPECTION:
N/A



Viet Ha
0406246384
viet@vietha.com.au
vietha.com.au



Springvale

Disclaimer: Floor Plan measurements are approximate and are for illustrative purposes only. While we do not doubt the floor plans accuracy, we make no guarantee, warranty or representation as to the accuracy and completeness of the floor plan.

Craig Hollowell
PHOTOGRAPHY

Disclaimer: Please note this floor plan is for marketing purposes and is to be used as a guide only. All dimensions are estimates only and may not be exact measurements.