

112 CONDELL PARK ROAD, WILTON, NSW, 2571



SOLD

OPEN HOME CANCELLED - OFFER TAKEN

Welcome to 112 Condell Park Rd, Wilton.

This exquisite family home is proudly positioned in one of Bingara Gorge's quiet pockets. Spread over a sensational floor plan, its modern interiors are accompanied by a host of quality inclusions that can be adorned throughout. Possessing a seamless combination of practicality, family functionality and effortless comfort that cleverly creates a peaceful ambience which flows naturally from room to room.

Boasting expansive living quarters that fill with natural light and showcasing multiple entertaining spaces you can enjoy with guests or by spending quality time outdoors with loved ones while basking under the mesmerising sunsets filling the home with its warm afternoon glow.

The home's superb setting is complemented by its beautiful surroundings and is tailored to those seeking a relaxed lifestyle in a family friendly estate.

Features Include:

- Front verandah overlooks the manicured front yard & adjacent land
- Boasting four generously proportioned bedrooms with built in robes
- Master suite is equipped with a walk in robe & ensuite
- Theatre room
- Expansive open plan living / dining room
- Well appointed kitchen with ample cupboard & bench space
- Walk in pantry
- Quality appliances including a dishwasher
- Gas cooking
- Breakfast bar
- Bright & airy main bathroom includes a bathtub & floor to ceiling tiling
- Spacious laundry includes a built in linen closet & backyard access
- Walk in linen closet
- Split system air conditioning
- Entertaining alfresco with sweeping escarpment views
- Section for a firepit with built in seating
- Low maintenance backyard
- Double garage includes remote, internal & drive through access to the backyard
- Garage caters enough extra space to be utilised as a workshop
- Double lock up side gates can accommodate a caravan, boat or trailer
- 581sqm block

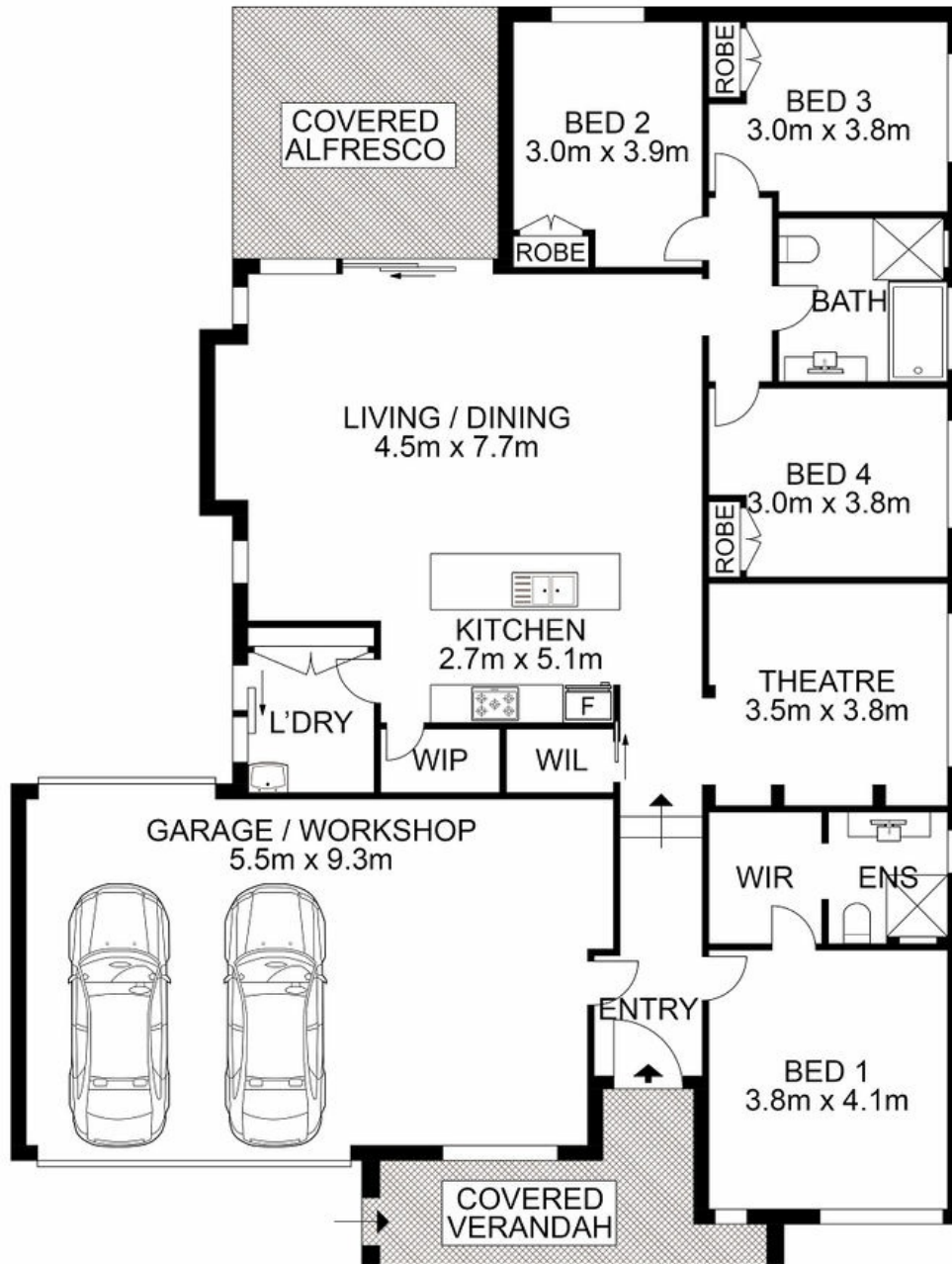
4 BED | 2 BATH | 2 CAR

PRICE:
\$1,100,000

OPEN FOR INSPECTION:
N/A



Adam Bryant
0455672323
adam@atrealty.com.au
www.atrealty.com.au



 AGENCY

Disclaimer: Please note this floor plan is for marketing purposes and is to be used as a guide only. All dimensions are estimates only and may not be exact measurements.

112 Condell Park Road, Wilton

Adam Bryant • All measurements are approximate • Drawn for marketing purposes only
 0455672323
 adam@atrealty.com.au
 www.atrealty.com.au

