



FOR LEASE

LARGE FAMILY HOME IN A QUIET STREET

Conveniently located in a quiet street, this property is suitable for a large family. Situated on 700m² lot with plenty of back yard space, entertainment area and multiple living rooms, called perfect family home.

- 4 carpeted bedrooms with ceiling fans
- Master bedroom with large Walk In Robe, ensuite and Air-conditioning
- Double remote garage with internal access and laundry
- New Carpet in the all the bedrooms
- Undercover patio area overlooking the backyard
- Freshly Painted
- Large Kitchen with ample storage
- Fully fenced large back yard
- 2 Large Bathrooms
- Large living areas
- Security Screens
- Close to local school, shops and parks
- Easy access to Ipswich and Logan Mwy
- Short drive to rail.

Call to book an inspection today !

Disclaimer : Whilst every effort has been made to ensure the accuracy of these particulars, no warranty is given by the vendor or the agent as to their accuracy. Interested parties should not rely on these particulars as representations of fact but must instead satisfy themselves by inspection or otherwise.

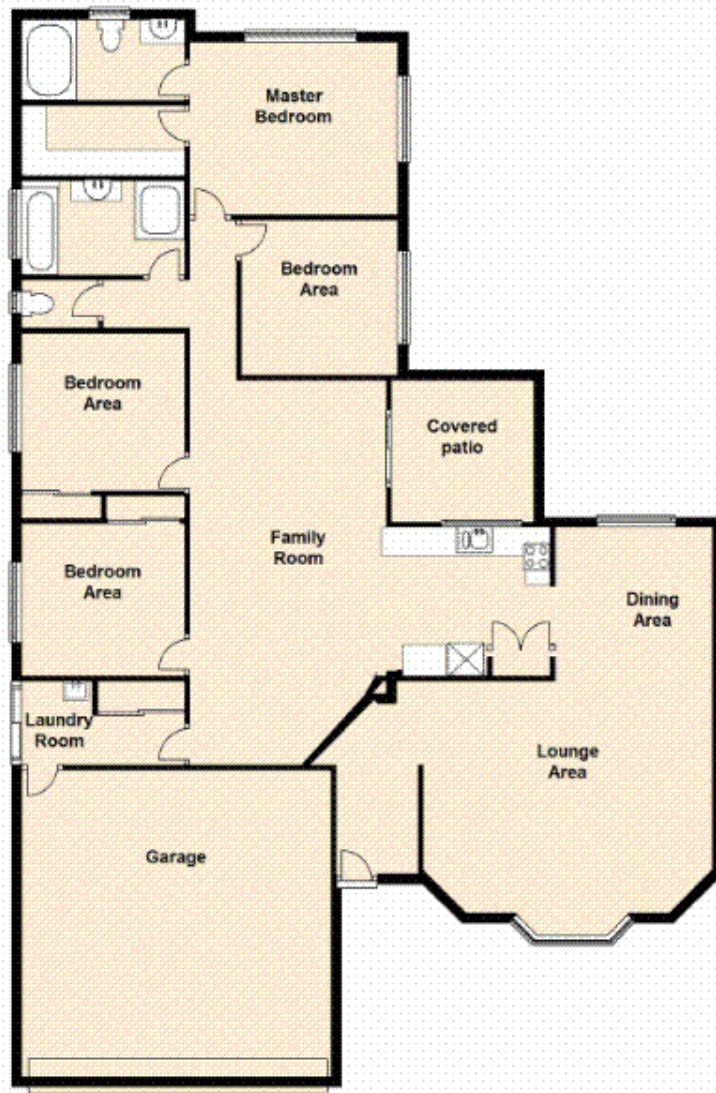
4 BED | 2 BATH | 2 CAR

PRICE:
\$475 per week

OPEN FOR INSPECTION:
N/A



Mohammad Sahadat
0430078532
mohammad@atrealty.com.au
www.atrealty.com.au



Disclaimer: Please note this floor plan is for marketing purposes and is to be used as a guide only. All dimensions are estimates only and may not be exact measurements.