



**SOLD**

## SPACIOUS CITY TOWNHOUSE WITH RAINTREE VIEW COURTYARD

Located only two streets to the Esplanade, this spacious townhouse is the ideal convenient lifestyle or easy solid investment property. Featuring courtyard with green park aspects, high raked ceilings upstairs, two large bedrooms both with ensuites, the master with a huge walk in wardrobe, open plan living, plus powder room downstairs. Fully furnished and self-contained, dishwasher, split system aircons and security screens throughout. Remote lock up garage plus extra storage, with direct access to the unit. A secure remote access complex of only 10 townhouses, complete with swimming pool.

Rental Appraisal \$470 per week aprox  
Body Corporate Fees \$3,520 per annum  
Council Rates \$2600 per annum aprox

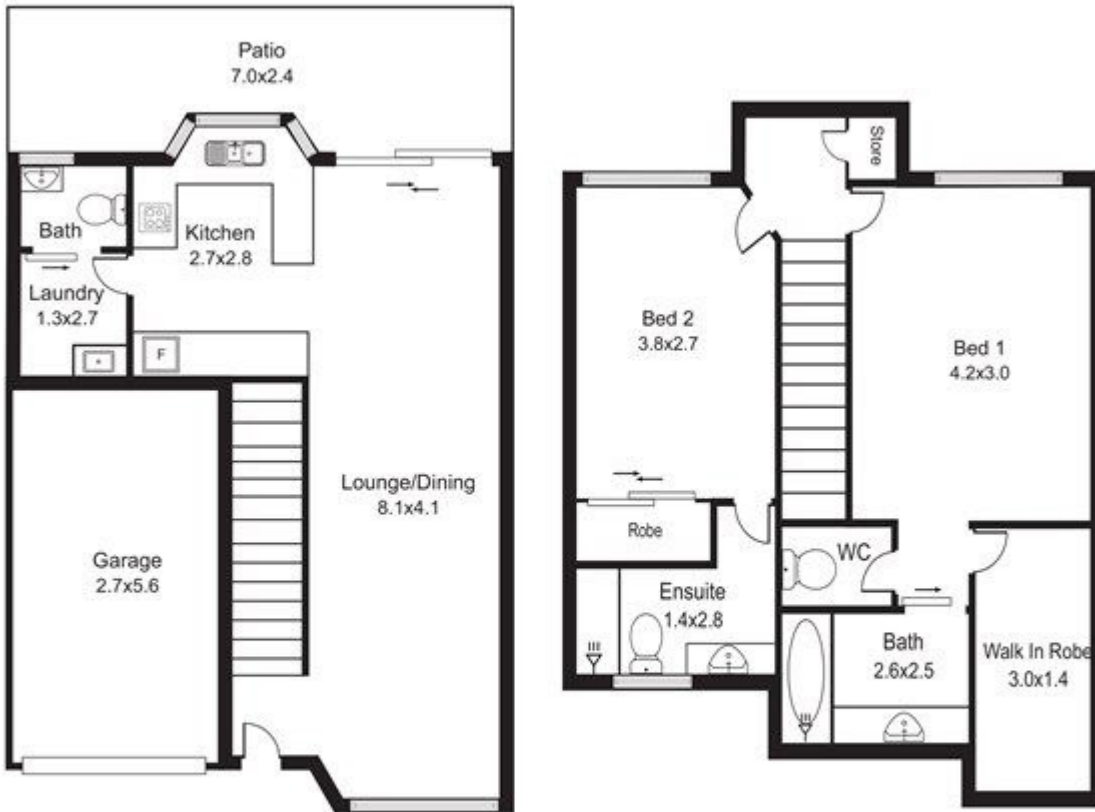
2 BED | 2 BATH | 1 CAR

PRICE:  
\$380,670

OPEN FOR INSPECTION:  
N/A



**Zoe Wicks**  
**0477114778**  
zoewicks@atrealty.com.au  
[www.atrealty.com.au](http://www.atrealty.com.au)



Illustrative Purposes only Dimensions are approx.  
 This drawing is not to scale

Disclaimer: Please note this floor plan is for marketing purposes and is to be used as a guide only. All dimensions are estimates only and may not be exact measurements.