



SOLD

ABSOLUTE WATERFRONT WITH VIEWS FROM EVERY ROOM

Great location...east facing...gorgeous waterfront...

Quiet location in a small cul-de-sac only 5 minutes (3km) drive to the ferry, school and shops
Large 1247 sqm block with established gardens including fruit trees to give total privacy. Ample room for veggie garden. Plans available for a previously approved 3rd bedroom extension.

- * Main bedroom with sliding door to water facing balcony, built in wardrobes and en-suite.
- * Second bedroom also with built in wardrobes and direct access to main bathroom and views
- * Open plan kitchen/dining/lounge
- * Split air conditioning system to living area
- * Polished timber hardwood floors throughout
- * Quality double blinds and screens to all windows
- * Ceiling fans in all rooms
- * Front and rear balcony's fully screened
- * Rear balcony fully tiled
- * Side balcony also has wonderful views
- * Car parking /workshop under house
- * Access to two balconies for fabulous views to Canaipa passage and Nth Stradbroke Island.
- * Watch the sunrise or the full moon lighting up the water from the comfort of your rear deck
- * Winter fire pits, summer BBQ's, or just relaxing "Island Style "
- * Gas cooktop and gas oven
- * Solar hot water
- * Ramp access to home
- * Concrete driveway
- * Car parking for two cars and workshop underneath
- * 3.5 km to Wahine Boat Ramp
- * 6 km to Sandy Beach Recreation Reserve

It doesn't get any better than this!!

CALL SUE NOW TO INSPECT 0408 789 399

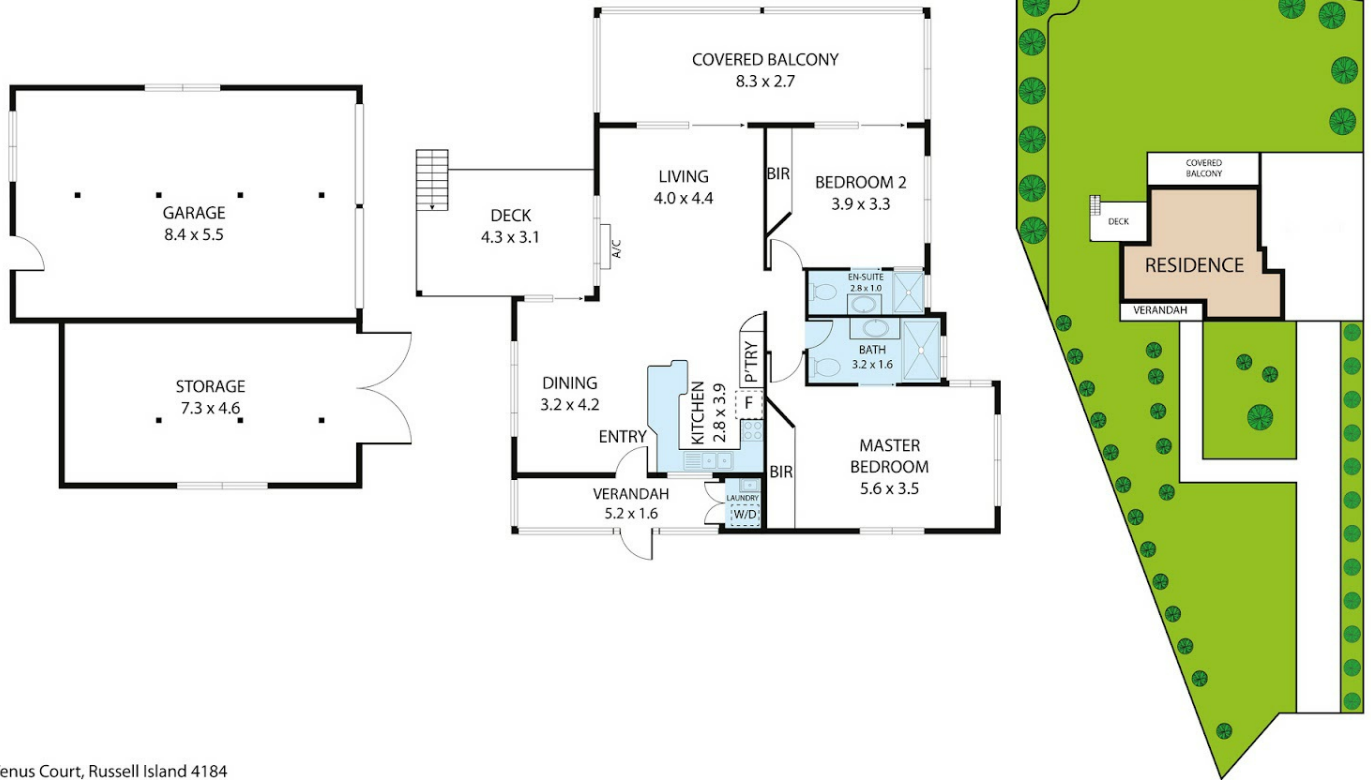
2 BED | 2 BATH | 2 CAR

PRICE:
\$760,000

OPEN FOR INSPECTION:
N/A



Sue Bloomfield
0408789399
suebloomfield@atrealty.com.au
www.atrealty.com.au



5 Venus Court, Russell Island 4184

Whilst every attempt has been made to ensure the accuracy of the floor plan contained here, measurements of doors, windows, rooms and any other items are approximate and no responsibility is taken for any error, omission, or misstatement. This plan is for illustrative purposes only and should be used as such by any prospective purchaser.

Disclaimer: Please note this floor plan is for marketing purposes and is to be used as a guide only. All dimensions are estimates only and may not be exact measurements.